



RESEARCH REPORT

2015-2020

“Making oral health
everyone’s business”



WHO WE ARE

The Centre for Oral Health Outcomes and Research Translation (COHORT) is Australia's first inter-professional oral health research centre



VISION

At COHORT, we believe oral health is everyone's business. With the known impact of poor oral health on systemic conditions such as cardiovascular disease, diabetes, stroke and adverse pregnancy outcomes, we strive to get non-oral health professionals including nurses, midwives and general practitioners to play an active role in promoting oral health

MISSION

COHORT is a unique collaboration between Western Sydney University (School of Nursing & Midwifery) and South Western Sydney Local Health District (Oral Health Services), and partners Nepean Blue Mountains Local Health District (Oral Health Services) to enable the translation of our interprofessional oral health research across Greater Western Sydney and beyond, to impact students, clinicians and the community.

STRATEGY

Our focus is on developing and implementing new models of care including evidence-based resources and training for non-oral health professionals and undergraduate students to provide oral health education, screening and referrals to their patients. We also work with government bodies/industry partners to change and improve clinical practice.

CONTENTS

Who We Are.....	2
Contents	3
Director's Report	4
Associate Professor Ravi Srinivas.....	5
Professor Deborah Hatcher	5
Our People.....	6
Affiliates.....	8
Interns.....	9
Past Members.....	9
COHORT at a Glance.....	10
Research Streams	12
1. Maternity	14
2. Cancer.....	16
3. Diabetes.....	16
4. Cardiovascular Disease	17
5. Stroke.....	17
6. Aboriginal health.....	18
7. Disability	19
8. Mental Health.....	19
9. Paediatrics.....	20
10. Obesity.....	21
11. Drug Health	21
12. Aged and Palliative Care.....	22
13. Health Services	23
14. Interprofessional Education.....	25
Community Engagement.....	27
Engaging Academics	28
Engaging Clinicians.....	30
COHORT Partnerships	32
NBMLHD Oral Health Services.....	32
Dental Health Services Victoria	34
Australian College of Midwives.....	35
Working together: Key Collaborations	36
Research Translation and Impact.....	38
Awards.....	40
Funding.....	42
Publications.....	44
Conference Presentations.....	48
Social activities.....	55
Future Directions.....	56
Get to know us.....	58

DIRECTOR'S REPORT

Five years ago I had the vision to set up an interprofessional oral health research centre in South Western Sydney after successfully developing the Midwifery Initiated Oral Health (MIOH) program as part of my post-doctoral research. This vision came to fruition through the gracious support of A/Prof Ravi Srinivas, Director Oral Health Services, South Western Sydney Local Health District, and Emeritus Prof Rhonda Griffiths, Dean of the School of Nursing & Midwifery at Western Sydney University (WSU) and resulted in the establishment of the Centre for Oral Health Outcomes & Research Translation (COHORT) at the Ingham Institute for Applied Medical Research. The key focus of this unique collaboration was to integrate oral health into general health systems and train the broader workforce to promote oral health as well as improve the delivery and efficiency of public oral health services all of which are key priorities of Australia's National Oral Health plan (2015-2024).

Looking back at the last five years I am truly amazed at the progress of COHORT. We've grown from two staff in 2015 to 22 research staff and affiliates and expanded our research to 14 streams across the lifespan involving numerous collaborators both locally, nationally, and internationally. In 2017 a formal partnership was formed with Nepean Blue Mountains Local Health District to expand COHORTs reach to Greater Western Sydney and in 2019 COHORT and partners launched the Australian Network for Integration of Oral Health to promote interprofessional oral health care nationally. As you will read in this report COHORT has also been hugely successful in grants, publications, and awards and more importantly in delivering research impact by working closely with consumers and policymakers to improve the oral health of disadvantaged populations.

COHORT has also become a well-recognised training hub attracting 8 higher degree research students and 10 research interns as well as developing professional development training programs in oral health for nurses and midwives. Further, COHORT has been effective in integrating oral health modules into the undergraduate nursing and midwifery curriculums at WSU- another first for Australia. I would like to thank all the staff, students, and affiliates for their ongoing support and outstanding commitment to COHORT. Their hard work and expertise have been invaluable in ensuring the Centres continued success in putting the mouth back into the body and making oral health everyone's business.

I hope you enjoy our five-year research report.



ASSOCIATE PROFESSOR RAVI SRINIVAS

Its pleasing to note that we have completed the five year milestone. Right from its inception as a group, COHORT has strived to provide a platform to foster interprofessional research with a focus on collaboration and translation. This essentially means that for research to convey value it must be able to be implemented at the bedside or chairside. The vision of SWSLHD and WSU in supporting this centre from inception has been extraordinary. I am looking forward to the exciting journey as SWSLHD Oral Health Services builds service capability including development of specialist services. Research will continue to be a basis for clinical practice and COHORT will play an important role in providing patient centred care.



PROFESSOR DEBORAH HATCHER

On behalf of the School of Nursing and Midwifery at Western Sydney University, I am pleased to present the COHORT 2015-2020 Research Report. This new and unique partnership with South Western Sydney Local Health District Oral Health Services has thrived over the last 5 years, resulting in COHORT becoming a leading centre for interprofessional oral health care in Australia.

The School is very proud of this partnership, expanding the scope of practice of both our students and the Nursing and Midwifery profession to oral health care for the first time in Australia. It has connected academics from the School of Nursing and Midwifery to clinicians and industry partners, resulting in innovative research programs across greater western Sydney and beyond that deliver research impact through improved patient outcome and clinical practices. This report also reflects the significant research output COHORT has delivered since inception, including grants, publications and awards, as well as HDR students and international collaborations.

I look forward to the continued growth of COHORT both nationally and internationally.





OUR PEOPLE



RINU MATHEW
Research Administrative Assistant

MHRM
Rinu has been working with COHORT as a research administrative assistant since 2018. Her role involves high profile stakeholder interaction and engagement, She has a strong ability to streamline processes and maximize efficiency. She has completed her Masters in Human Resource Management from overseas.



PRAKASH POUDEL
PhD Student

MPH, MA
Prakash is undertaking a PhD research to inform the development of an Oral Health program in Diabetes care. He won the 2019 WSU VC Award for Excellence in University Engagement and Sustainability. Prakash is also working as the research coordinator with Drug Health Services SWSLHD.



PAULA SANCHEZ
PhD Student

BN(Hons), GradCertIntCare, GradDipAcuteCare
Paula is a lecturer at Western Sydney University. She has extensive clinical, academic and research experience. She submitted her Phd in June 2020 and the results of her thesis have highlighted the need for a new model of oral health care in the Australian cardiac setting.



TIFFANY PATTERSON NORRIE
Research Assistant
PhD Student

BMedHlthSci, MND
Tiffany has been involved in numerous qualitative research projects in her role as a research assistant with Western Sydney University. She is also a clinical dietitian. Tiffany is currently completing her PhD exploring the role of dietitians in oral health promotion in populations with an eating disorder.



AJESH GEORGE
Director, COHORT

BDS, MPH, PhD
Ajesh is an Associate Professor at the SoNM, WSU and Honorary Associate Professor in the School of Dentistry at University of Sydney. He is a leading expert in interprofessional oral health and has published widely in this area, attracting over \$5million in funding and numerous awards. He supervises 9 PhD students.



RAVI SRINIVAS
Director, SWSLHD Oral Health Services

BDS, PGDipComDent, MCLinSup&ClinLdp, FICD
Ravi is an experienced dentist and health care administrator having held senior management roles in both the public and private health care sectors. He has a particular interest in health services research, clinical dentistry and public health. He is also the co-founder of COHORT.



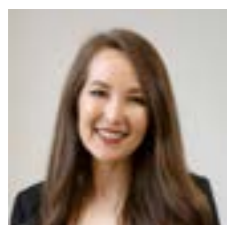
NIDHI SARASWAT
Research Assistant
PhD Student

BDS, MDS
Nidhi has worked on several reviews and projects in her role as a research/administrative assistant for Western Sydney University. She is currently pursuing a PhD with Western Sydney University 'Exploring oral cancer risk behaviours of Indian immigrants in Australia' for which she has published two reviews.



JACQUELINE ROJO
PhD Student

BN(Hons), GradCertEmerg, BSc(Adv Sc)(F Sc), MN(CL)
Jacqueline is an Associate Lecturer at Western Sydney University. Her passion includes higher education and is currently undertaking her PhD which will introduce oral health in the undergraduate nursing program at WSU.



AMY VILLAROSA
Research Officer
PhD Student

B NutrDiet, MBIostat
Amy provides assistance across many COHORT projects, and her expertise lies in quantitative research and biostatistics, with her mixed methods PhD focusing on childhood obesity in the dental setting. She has authored 23 publications and obtained more than \$200,000 over 6 grants.



ARIANA KONG
Research Support Officer
PhD Student

BHSc (Hons), MPodMed
Ariana is involved across a wide range of research streams in her role as a research support officer at COHORT. Her doctoral work with Western Sydney University focuses on using an action research methodology to adapt an existing model of care to promote Aboriginal health and wellbeing.



REECHA ACHARYA
MRes Student

BDS
Reecha is currently pursuing Master of Research at Western Sydney University. Her current project involves exploring the experiences of foster/kinship carers in relation to oral health of children living in out-of-home care (OOHC) in Australia. She was also a summer scholar at Western Sydney University.



JED MONTAYRE
Senior lecturer

BNurs, MN, PhD
Jed is a senior lecturer and researcher at Western Sydney University. His research interests are population ageing, health outcomes of older migrant populations, age-friendly communities and the ageing workforce. Jed received the New Zealand Nurses' organisations Young Nurse of the Year award in 2016.

AFFILIATES



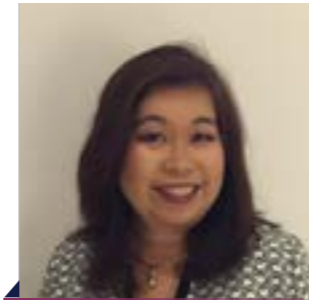
Erin Hartnett
Program Director, OHNEP,
NYU, United States



Philcy Philip
Dental Consultant, Baptist
Hospital, Bengaluru, India



Cynthia Valderrama
Senior Oral Health
Therapist, SWSLHD



Della Maneze
Multicultural Health
Promotion Officer, SWSLHD



Bhavya Talluri
Research Assistant, SoNM,
Western Sydney University



Bronwyn Everett
Associate Professor, SoNM,
Western Sydney University



Caleb Ferguson
Snr Research Fellow, SoNM,
Western Sydney University



Donna Wang
PhD Student, SoNM,
Western Sydney University



Hannah Dahlen
Professor, SoNM, Western
Sydney University



Lien Lombardo
A/Research Fellow, SoNM,
Western Sydney University



Lucie Ramjan
Associate Professor, SoNM,
Western Sydney University



Nathan Wilson
Associate Professor, SoNM,
Western Sydney University



Shyama Ratnayake
Associate Lecturer, SoNM,
Western Sydney University

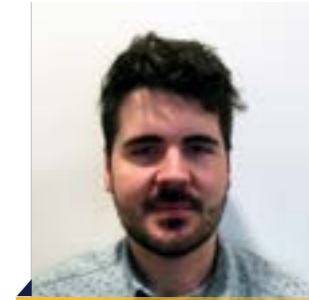


Yenna Salamonson
Professor, SoNM, Western
Sydney University

INTERNS



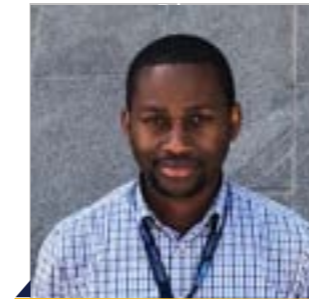
Josh Tan
Research Intern, 2019



Brandon Smith
Summer Scholar, 2019



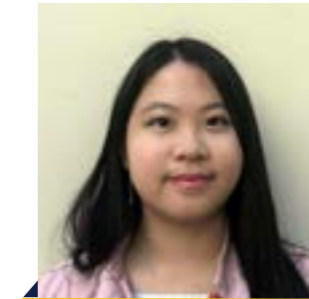
Camila Sanchez
Summer Scholar, 2019



David George
Summer Scholar, 2017-19



Boaz Villarosa
Research Intern, 2018-19



Clarity Chua
Research Intern, 2018



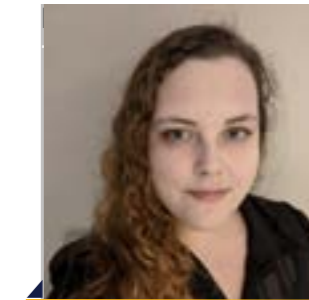
Caleb Ngoh
Research Intern, 2018



Joel Woodmass
Research Intern, 2017



Zhen Lin
Summer Scholar, 2016-17



Julia Farley
Summer Scholar, 2015-16

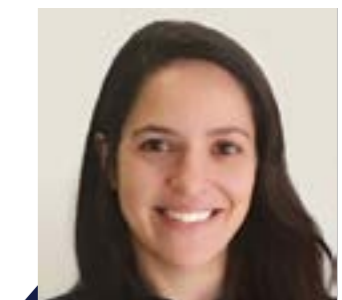
PAST MEMBERS



Kylie Smidt
Patient Safety and Quality
Officer, SWSLHD, 2015-19



Emma Elcombe
Research Assistant,
COHORT, 2015-16



Mariana Sousa
Senior Research Officer,
COHORT, 2017-18



COHORT AT A GLANCE

14
Research
STREAMS

UN Sustainable Development Goals



FoR
1110 Nursing
1117 Public Health & Health Services
1105 Dentistry
DIVISION 11

\$2.31
MILLION

In funding
\$205,812 Category 1
\$1,635,662 Category 2
\$469,692 Category 3

55
PUBLICATIONS
48 Quartile 1 & 2

24 AUSTRALIAN
Collaborators



8 HDR
Students



4 Scholarships

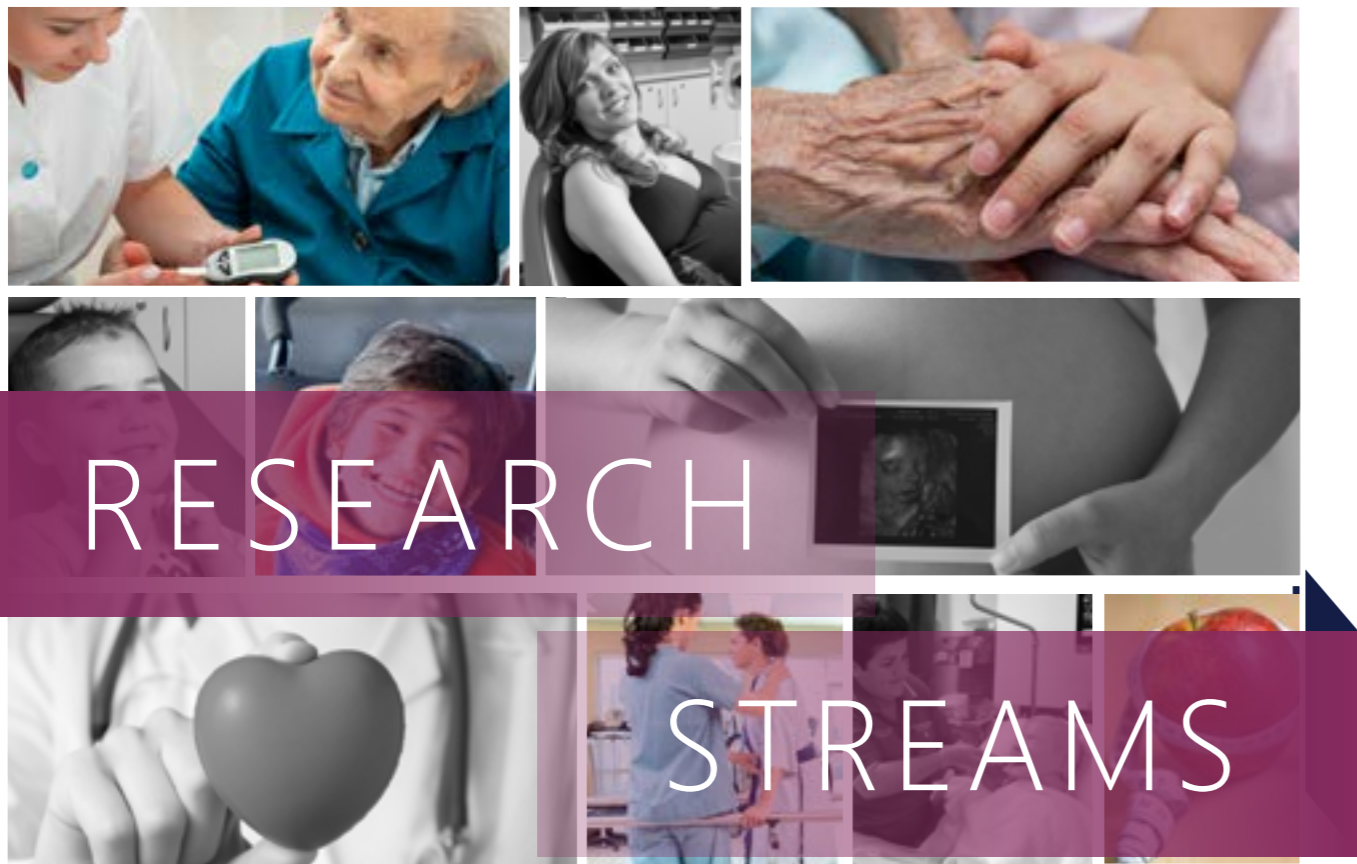
11 INTERNATIONAL
Collaborators



85 Conference
PRESENTATIONS
44 Local, 18 National, 23 International



10 AWARDS



COHORT currently has 14 research streams: Maternity, Paediatrics, Aboriginal Health, Cancer, Cardiovascular Health, Diabetes, Disability, Drug Health, Mental Health, Obesity, Stroke, Interprofessional Education, Health Services, and Aged and Palliative Care. Across all of these streams, COHORT engages in interprofessional oral health projects, aiming to capacity-build a range of health care professionals to engage in integrated oral health care. These projects focus around development of models of care, educational resources, training programs and other strategies.



1. MATERNITY

The Midwifery Initiated Oral Health (MIOH) Program

Investigators

- A/Prof Ajesh George
- Prof Maree Johnson
- Prof Hannah Dahlen
- A/Prof Shilpi Ajwani
- Prof Sameer Bhole
- Prof Anthony Blinkhorn
- Sharon Ellis
- A/Prof Ravi Srinivas
- Dr Albert Yaacoub
- Dr Kathy Tannous
- Emma Elcombe
- Dr Anthony Yeo

Collaborators: SWSLHD, SLHD, NBMLHD, Sydney Dental Hospital (SDH), Centre for Oral Health Strategy (COHS) NSW, Australian College of Midwives (ACM), Dental Health Services Victoria (DHSV), Tharawal Aboriginal Corporation, Centre for Health Equity, Training, Research and Evaluation (CHETRE), Australian Dental Association (ADA) NSW, Australian Catholic University

Project Overview

There is limited emphasis being placed on perinatal oral health by prenatal care providers in Australia. Pregnant women have no system in place that can offer them regular oral assessment during pregnancy and prompt dental treatment at minimal or no cost as experienced in other countries. To address the oral health needs of pregnant women, the study investigators have developed a unique midwifery initiated oral health (MIOH) model to promote and maintain maternal oral health. This project was conducted over eight phases to review the existing literature, develop the model of care and training program, and evaluate the effectiveness, feasibility, acceptability and cost-effectiveness of the model of care.

Project Output

The MIOH program is COHORT's flagship project producing significant research output. A total of \$688,719 in funding was obtained for the MIOH program (p. 39). The project was conducted between 2008-2020, with 27 publications (pp. 42-43) and 29 conference presentations (p. 48-49). The MIOH program, the first of its kind, is now endorsed and available nationally through the Australia College of Midwives and offers 16 continuing professional development (CPD) hours for all midwives. Ongoing research resulted in the development of new prenatal oral health brochures (translated into four languages) outlining guideline recommendations on oral health care for pregnant women that was endorsed by NSW Health and distributed across the state (p. 28). Collaboration with Tharawal Aboriginal Medical Services and the Centre for Health Equity, Training, Research and Evaluation resulted in the development of 3 culturally sensitive oral health promotional resources for Aboriginal pregnant women, children and adults endorsed by NSW Health. Collaboration with NSW Kids and Families has resulted in the production of an audio-visual resource on oral health care during pregnancy which is being distributed across antenatal and dental services in the state. The MIOH program has been included in Dental Health Services Victoria's 2016-2021 strategic plan and rolled out across the state. The oral health assessment tool is used internationally and has been included in Victoria's state Birthing Outcome System which used by 75% of hospitals.



Developing perinatal oral health guidelines for Dentists and prenatal care providers in Australia (PERIOH)

Investigators

- A/Prof Ajesh George
- Prof Maree Johnson
- Prof Hannah Dahlen
- A/Prof Shilpi Ajwani
- Prof Sameer Bhole
- Prof Jenny Reath

Collaborators: Western Sydney University, COHS NSW, ADA NSW, Phillips Australia, SLHD, SDH

Project Overview

Despite the importance of oral health care during pregnancy, pregnant women rarely seek dental care during pregnancy. There are significant provider barriers that further exacerbate this problem, including a lack of clear consensus among dentists and antenatal care providers regarding perinatal oral health care. The aim of this study is to develop, implement and evaluate perinatal oral health (PERIOH) guidelines for antenatal and dental care providers in Australia. This project will be conducted over 3 phases to form a multidisciplinary committee, conduct pilot work, and develop and evaluate the guidelines.

Project Output

Since 2015, two papers have been published (p. 42) and the findings presented at 4 conferences (p. 48-49).

2. CANCER



Exploring the oral cancer risk behaviours of Indian immigrants in Australia

Investigators

- Dr Nidhi Saraswat
- Dr Rona Pillay
- A/Prof Bronwyn Everett
- Dr Neeta Prabhu
- A/Prof Ajesh George

Collaborators: SWSLHD, WSLHD, DHSV, King's College London, University of Sydney (USYD)

Project Overview

People in South Asia have the highest rates of oral cancer globally, and after immigrating to other countries, these practices may continue. This project aims to explore the oral cancer risk behaviours of Indian immigrants in Australia. It will be conducted across three phases to identify the existing evidence, explore perspectives of Indian immigrants and GPs, and quantify oral risk cancer behaviours, knowledge and attitudes of Indian immigrants.

Project Output

This project has been led by a PhD Candidate and since 2018 two articles have been published (p. 40), and project findings presented at three local and international conferences (p. 45).

3. DIABETES



Developing a diabetes oral health program (DIOH) for diabetes nurse educators in South Western Sydney

Investigators

- Prakash Poudel
- A/Prof Ajesh George
- Prof Rhonda Griffiths
- Dr Vincent Wing-Ming Wong
- Dr Amit Arora

Collaborators: SWSLHD, WSLHD, Diabetes Australia (NSW and ACT), COHS NSW, ADA NSW, NSW Health, University of Melbourne, Kathmandu University, Sydney South West GP Link

Project Overview

This mixed-methods project aims to explore the oral health knowledge, practices and perceptions of people with diabetes and their care providers to inform a model of oral care. It will be conducted over three phases involving a systematic review of current evidence and needs assessments with diabetes care providers and people with diabetes.

Project Output

Funded by a PhD scholarship (p. 38), and 2 grants totalling \$27,800 (pp. 38-39). Four papers have been published (p. 41) along with 7 conference presentations (p. 46-47). Created diabetes oral health brochure with NSW Health and won the 2019 SWSLHD Quality Award.

4. CARDIOVASCULAR DISEASE

Developing a cardiovascular oral health (CARDIOH) program within a cardiac rehabilitation setting: A mixed method study

Investigators

- Paula Sanchez
- A/Prof Ajesh George
- A/Prof Bronwyn Everett
- Prof Yenna Salamonson
- Prof Julie Redfern
- A/Prof Lissa Spencer
- A/Prof Rohan Rajaratnam
- A/Prof Ravi Srinivas
- A/Prof Shilpi Ajwani
- Dr Jed Montayre
- Dr Caleb Ferguson
- Prof Sameer Bhole

Collaborators: SWSLHD, SLHD, The George Institute for Global Health, COHS NSW, SDH, USYD

Project Overview

Poor oral health can increase the risk of cardiovascular disease yet there is limited focus on this during cardiac care in Australia. This project aimed to develop an oral health model where cardiac nurses could promote oral health. It included three phases involving literature reviews, exploring the perceptions of cardiovascular patients and nurses towards oral health and determining the oral health status, behaviours and knowledge of cardiovascular patients.

Project Output

Project funded by a PhD scholarship (p. 39), and a \$3,000 student internship (p. 38). Since 2015, 5 papers published (p. 41), findings presented at 14 conferences (p. 45-46) and an oral health brochure for cardiac patients developed and endorsed by NSW Health.

5. STROKE



Integrated Dental Care after Stroke (IDEAS) Project

Investigators

- A/Prof Shilpi Ajwani
- Dr Caleb Ferguson
- A/Prof Ajesh George
- Nadia Burkolter
- Craig Anderson
- Prof Sameer Bhole
- Amy Villarosa
- Ariana Kong
- Bhavaya Talluri

Collaborators: SLHD (lead), SDH, USYD

Project Overview

Poor oral health among stroke survivors can increase the risk of hospital acquired pneumonia, increases length of hospital stay, and reduces a person's quality of life. This project aims to develop a model of care that capacity builds stroke clinicians to promote oral health among stroke patients. This will be conducted over three phases where the existing literature will be reviewed, stroke survivors, nurses and healthcare professionals will be interviewed, and a training program will be developed and pilot tested.

Project Output

This project has been funded through a partnership grant totalling \$13,972 (p. 38). Since 2017, two papers published (p. 43), findings presented at four conferences (see p. 50), and an oral health brochure for stroke patients developed and endorsed by NSW Health.

6. ABORIGINAL HEALTH



Grinnin' Up Mums & Bubs: Promoting oral health among Aboriginal pregnant women through Aboriginal Health Workers

Investigators

- Ariana Kong
- A/Prof Ajesh George
- A/Prof Lucie Ramjan
- Dr Mariana Sousa
- Joanne Goulding
- Dr Michelle Dickson
- Nathan Jones
- A/Prof Ravi Srinivas
- Boe Rambaldini
- A/Prof Kylie Gwynne

Collaborators: SWSLHD, Greater Western Aboriginal Health Service, The Poche Centre for Indigenous Health, COHS NSW, University of Technology, Sydney

Project Overview

Although oral health models of care exist for pregnant women, these may not be culturally appropriate for Aboriginal people. The Grinnin' Up Mums & Bubs project aims to work together with Aboriginal communities to create and pilot test a culturally-safe model of oral health care for Aboriginal pregnant women. This will be conducted over three phases to review the existing literature, explore the perspectives of Aboriginal Health Workers and Aboriginal pregnant women, develop the model of care, and pilot test the training program.

Project Output

Supported by a PhD scholarship (p. 38), and \$20,000 in grants (pp. 38-39). Two papers were published, (p. 40) and findings presented at 8 conferences (p. 44). Culturally safe oral health resources are being developed with the community and NSW Health.

The oral health status and behaviours of Aboriginal children in South Western Sydney, NSW

Investigators

- A/Prof Ajesh George
- Amy Villarosa
- Dr Suzanne Ingram
- Kaniz Fatema
- Emma Elcombe
- Prof Lynn Kemp
- Sheryl Scharkie
- Cheryl Anderson
- Natasha Bucknall
- A/Prof Rebekah Grace
- Darryl Wright
- A/Prof Elizabeth Comino

Collaborators: Centre for Health Equity Training, Research and Evaluation (CHETRE), Translation Research and Social Innovation (TReSI) Group, Tharawal Aboriginal Corporation

Project Overview

The broad aim of this study was to understand the oral health concerns, behaviours and fluid consumption practices of Aboriginal children living in the South Western Sydney area. These children were recruited from two cohort studies, the Gudaga and Bulundidi Gudaga study, which incorporated oral health promotion, assessments and dental referrals through nurses participating in the study. The findings from this study were reported when the child were 18-48 months and then again when the children were 7-9 years of age.

Project Output

This study had \$16,410 in grant funding. Two papers were published (p. 40), and the findings have been presented at one conference and a workshop (p. 44). Three Aboriginal oral health brochures were developed from this study and endorsed by NSW Health for distribution statewide

7. DISABILITY



Improving oral health outcomes of people with intellectual and developmental disabilities

Investigators

- A/Prof Nathan Wilson
- A/Prof Ajesh George
- Zhen Lin
- Amy Villarosa
- Dr Avanti Karve
- Bonnie Morrison
- Margery Pithouse

Collaborators: WSLHD, DHSV

Project Overview

People with disabilities experience many challenges that affect their oral health status, including the need for assistance with daily activities, additional barriers to accessing dental care, and a higher likelihood of being socioeconomically disadvantaged when compared to the general population. The aim of this project is to provide a descriptive summary of the oral health status and oral health problems in people with an intellectual or developmental disability (IDD), as well as current strategies and interventions used to improve the oral health of people with IDD.

Project Output

Since 2016, this project received \$3,000 to fund a student internship (p. 39), two literature reviews were published (see p. 41) and the findings presented at one conference (see p. 47).

8. MENTAL HEALTH



Developing a dietitian initiated program for oral health and eating disorders

Investigators

- Tiffany Patterson Norrie
- A/Prof Ajesh George
- A/Prof Lucie Ramjan
- Dr Mariana Sousa
- Lindy Sank

Collaborators: Dietitians Association Australia, SLHD, SDH, UTS

Project Overview

In Australia, more than a million people are estimated to have an eating disorder (ED), which can impact oral health. This project aims to explore the experiences of dietitians in oral health promotion and prevention and explore the perceptions of individuals with an ED regarding their oral health practices. This project will be conducted over 3 phases to scope the current evidence, identify the oral health knowledge, attitudes and practices of dietitians and develop a dietitian initiated program for oral health and ED.

Project Output

Since 2018, one literature review has been published and the findings presented at three conferences (see p. 49).

9. PAEDIATRICS



Reducing dental decay in young children through an antenatal intervention: A longitudinal cohort study of MIOH kids

Investigators

- A/Prof Ajesh George
- Ariana Kong
- A/Prof Shilpi Ajwani
- Amy Villarosa
- Prof Maree Johnson
- A/Prof Ravi Srinivas
- Dr Albert Yaacoub
- Tiffany Patterson
- Prof Hannah Dahlen
- Prof Sameer Bhole
- Dr Mariana Sousa
- Norrie

Collaborators: SWSLHD, NBMLHD, SLHD, SDH, UTS, ACU

Project Overview

The MIOH program demonstrated a positive impact on the oral health status and practices of women during pregnancy. To build on this, this two-phase study aimed to assess the long term effectiveness of the MIOH program in reducing early childhood caries among children whose mothers received this intervention.

Project Output

This study has received a \$117,310 grant (p. 39), and one paper has been published in BMC Oral Health (p. 43)

Exploring the experiences of foster/kinship carers in relation to the oral health of children living in out-of-home care (OOHC)

Investigators

- Dr Reecha Acharya
- A/Prof Ajesh George
- Dr Stacy Blythe
- Harrison Ng Chok

Collaborators: Translation Research and Social Innovation (TReSI), Centre for Nursing and Midwifery Research, NBMLHD

Project Overview

Children in out-of-home care (OOHC) are a vulnerable population with increased physical, mental and dental problems compared to other children. However, no studies in Australia have explored the potential role of foster/kinship carers regarding the oral health of children in OOHC. This program of research aims to explore the perceptions, practices and attitudes of foster/kinship carers in relation to the oral health of children in OOHC.

Project Output

The project has received \$3,000 in student internship funding (p. 38) and since 2019, one literature review has been completed.

10. OBESITY



Children's Healthy Eating and Weight guideline Implementation (CHEWI) in the dental setting: The CHEWI project

Investigators

- Amy Villarosa
- Dr Della Maneze
- A/Prof Ajesh George
- A/Prof Ravi Srinivas
- A/Prof Lucie Ramjan

Collaborators: SWSLHD, NBMLHD, NSW Health, COHS, ADOHTA

Project Overview

The importance of maintaining healthy weight in childhood is well recognised. New guidelines inform the provision of growth assessment and dietary advice for children in the dental setting, and as dental professionals have not previously played a significant role in children's health weight, it is anticipated that a guideline implementation strategy (GIS) will be required for adherence to these guidelines. This four-phase study aims to therefore review the existing literature, co-design and evaluate a GIS for the new guidelines.

Project Outcomes

This study is supported through an NHMRC scholarship (p. 38) and has received \$20,733 in grants (p. 39). Since 2018, two papers have been published (p. 43), and the findings have been presented at four conferences (p. 49).

11. DRUG HEALTH



Developing, implementing & evaluating an alcohol & other drug oral health program for clients of Drug Health Services

Investigators

- Prakash Poudel
- Dr Gilbert Whitton
- A/Prof Ajesh George
- Sharon May
- Stephanie Hocking
- A/Prof Ravi Srinivas

Collaborators: SWSLHD

Project Overview

People with alcohol and other drug (AOD) addictions are at significant risk of poor oral health. AOD clinicians have the potential to promote oral health to this population. The broad aim of this study is to develop, implement and evaluate an innovative AOD Oral Health Care (AODOC) program to improve the oral health and quality of life of the clients attending Drug Health Services in South Western Sydney. As part of the AODOC program, a new model of care will be developed for AOD clinicians inclusive of a screening tool, training program, oral health promotional resources, and referral pathway.

Project Output

Since 2020, this project has acquired \$8,563 in funding (p. 38).

12. AGED AND PALLIATIVE CARE

Improving oral health outcomes for people living with disability in residential aged care facilities (ACOH)

Investigators

- Dr Sally Clark
- A/Prof Ajesh George
- Amy Villarosa
- Tiffany Patterson Norrie
- Cynthia Valderama
- Jennifer Anlezark
- Kylie Smidt
- Diana Wiskich
- Susan MacDonald

Collaborators: SWSLHD, Harbison Care

Project Overview

Many oral health problems associated with ageing are easily prevented by good oral hygiene practices and timely access to dental care. In response to this, the federal government rolled out the Better Oral Health in Residential Aged Care program to train nursing staff to provide oral care to aged care residents. This project evaluated the national program and identified additional strategies from the perspectives of managers, nurses and other caregivers to improve the oral health of aged care residents.

Project Output

This project received \$5,000 in funding since 2016 (p. 39). Three publications have been produced (see p. 40), and the findings presented at two conferences (see p. 45).

Developing, implementing and evaluating a palliative oral health program for patients in South Western Sydney (PALLIOH)

Investigators

- A/Prof Ajesh George
- A/Prof Ravi Srinivas
- Prof Deborah Parker
- Prof Meera Agar
- Dr Jennifer Wiltshire
- Janeane Harlum
- Amy Villarosa
- Ariana Kong

Collaborators: SWSLHD, University of Technology Sydney

Project Overview

Poor oral health can adversely impact the health outcomes and quality of life of people in palliative care. This study aims to develop, implement and evaluate a palliative oral health program to improve the oral health of people receiving palliative care in South Western Sydney. This project will be conducted across 3 phases to explore the perceptions, practices and knowledge of palliative care providers, dentists and patients, develop and evaluate an education program for palliative care providers and dentists, and pilot test this model of care.

Project Output

Since 2016, this project has received \$18,810 in funding (p. 39). One paper has been published and the findings presented at two conferences (pp. 44-45).

13. HEALTH SERVICES

Improving oral health service delivery through the investigation of trends and characteristics of patient complaints (TACTIC)

Investigators

- A/Prof Ajesh George
- Amy Villarosa
- Kylie Smidt
- A/Prof Ravi Srinivas

Collaborators: SWSLHD

Project Overview

There are currently no studies investigating the complaints regarding oral health care services in NSW. This sequential explanatory mixed-methods study aimed to explore the number and type of complaints received at oral health services in the South Western Sydney Local Health District.

Project Output

A project report has been provided to the oral health executive unit in SWSLHD

Evaluating the Oral Health Fee for Service Scheme in the South Western Sydney Local Health District

Investigators

- A/Prof Ajesh George
- Amy Villarosa
- Kylie Smidt
- A/Prof Ravi Srinivas

Collaborators: SWSLHD

Project Overview

The number of people utilising public dental services in NSW are increasing, with over 120,000 people on NSW public dental waiting lists. To relieve some of this strain, NSW Health implemented the NSW Oral Health Fee for Service Scheme (OHFSS) by which eligible patients are provided with a voucher to receive care from a registered private dental provider. This retrospective study aimed to use administrative data from the SWSLHD oral health services to examine the trends in uptake of the OHFSS.

Project Output

A project report was provided to the oral health executive unit in SWSLHD.

Critical care nursing Interventions to promote Oral Hygiene (CIOH)

Investigators

- Lien Lombardo
- Prof Yenna Salamonson
- A/Prof Ajesh George
- Dr Caleb Ferguson
- Amy Villarosa
- Ariana Kong
- Boaz Villarosa
- Rochelle Wynne

Collaborators: SWSLHD

Project Overview

Critical care nurses are at the frontline of providing often complex clinical care to patients with acute needs, and as a result, oral care may be overlooked despite its importance. To manage oral care, ventilator-associated pneumonia bundles may be introduced in the unit. However, the adherence of nurses and effectiveness of these interventions are not established. The aim of this project is to improve the oral health care delivered by critical care nurses to patients.

Project Output

One systematic review is in progress for this project.

Oral healthcare Practice, Awareness, Attitude study on Nurses in tertiary care setting of South India (Oral PAAN study)

Investigators

- Dr Philcy Philip
- Dr Caroline Elizabeth George
- Dr Gift Norman
- A/Prof Ajesh George
- Amy Villarosa

Collaborators: Bangalore Baptist Hospital (India)

Project Overview

People who are hospitalised are more likely to experience poorer oral health outcomes. Nurses, who are the first point of contact, are well-placed to provide oral care. In India, few studies have been published on the potential role of nurses in promoting oral care. This project aims design, develop and implement an oral health training program for nurses by assessing nurses' knowledge, identify barriers in providing oral care, and exploring the acceptability and feasibility of an oral care training program.

Project Output

This project has received \$3,000 in student internship funding (p. 39). Since 2016, this project has published one paper (see p. 40) and the findings presented at three conference (see p. 45).

14. INTERPROFESSIONAL EDUCATION



Implementing and evaluating an oral health module for the WSU Bachelor of Midwifery program (BMIOH)

Investigators

- A/Prof Ajesh George
- Dr Margaret Duff
- Prof Hannah Dahlen
- Prof Virginia Schmied
- Dr Elaine Burns
- Dr Holly Priddis

Project Overview

Midwives are in an ideal position to promote oral health during pregnancy. However, there is currently no formal education regarding maternal oral health available for undergraduate midwifery students. This study aimed to implement and evaluate Australia's first oral health module delivered to Bachelor of Midwifery students at Western Sydney University. This module could complement the existing MIOH CPD program.

Project Output

In-kind support from WSU was received for implementing this module. Since 2015, two papers have been published (p. 42) and an oral health component was successfully embedded into the Bachelor of Midwifery program.

Developing and evaluating an early childhood oral health module (ECOH-M) for the Masters of Family Health at WSU

Investigators

- A/Prof Ajesh George
- Dr Cathy Dixon
- Sharlene Vhalos
- Tanya Schinkewitsch

Collaborators: Karitane, Centre for Oral Health Strategy NSW

Project Overview

Australia launched the early childhood oral health (ECOH) program in 2007 for child and family health nurses (CFHNs) to provide oral health screening for children and oral health education to parents. However, training for the ECOH program is only available post-registration. This study developed and evaluated the implementation of Australia's first oral health module for postgraduate CFHNs students at Western Sydney University.

Project Output

This study received \$28,580 in funding (p. 39) and the findings were presented at one conference (see page 48). An oral health training video was also produced that has been endorsed by NSW Health and Karitane.

Integrating oral healthcare in the undergraduate nursing curriculum: The IONIC project

Investigators

- Jacqueline Rojo (PhD Candidate)
- Prof Yenna Salamonson
- A/Prof Ajesh George
- A/Prof Lucie Ramjan
- A/Prof Erin Hartnett (NYU)
- Dr Leanne Hunt

Collaborators: New York University (United States) Rory Meyers College of Nursing

Project Overview

With the growing body of evidence linking oral health to systemic health, preparing nurses to provide evidence-based oral health care is becoming a priority. Although oral health has been integrated into the nursing curriculum in the United States, the extent to which oral health care has been integrated into the undergraduate nursing or other health professional education program in Australia is not known. This project aims to develop and integrate oral health care education into undergraduate nursing and assess its effectiveness in improving the oral health care attitudes among students.

Project Output

This project has received \$3,000 in student internship funding (p. 38) and since 2019 one paper has been published (see p. 42).

Community Engagement

Pictured (left to right): Ivonne Allebi and her child, Ajesh George



Launch of MIOH DVD

In 2015, the Assistant Minister for Health Jai Rowell launched the MIOH video resource. This resource aimed to provide women with practical advice on maintaining good dental health during pregnancy. Among the community, this video serves to increase awareness and knowledge regarding maternal oral health

NAIDOC Community Event

In 2019, Ariana Kong had the opportunity to participate in a NAIDOC community event. Through this, she was able to engage and connect with Aboriginal Health Workers, nurses and community members to share messages about oral health during pregnancy.



Pictured (left to right): Ronita Ruttley, Marie Lamont, Tanya Dennis-Ikhinmwin, Ariana Kong

Pictured: Amy Villarosa



Oral Health and Healthy Weight for

In February 2019, COHORT was invited to participate in an Ingham Institute community event that targeted local parents from culturally and linguistically diverse, as well as refugee backgrounds. Amy Villarosa was able to present messages about oral health and healthy weight of

ENGAGING ACADEMICS

Western Sydney University



JACQUELINE
ROJO

RN, BN, GradCertEmergN, MN(CL), BSc(Adv. Sc)(F.Sc)

As part of a her PhD study, Jacqueline is currently developing and embedding oral health into the undergraduate nursing curriculum. Jacqueline is working with interprofessional oral health experts at New York University and other key academics through the Australian Network for Integration of Oral Health (NIOH).



DR CALEB
FERGUSON

BScN, MHIth, PhD, FESC, FCSANZ

Caleb's research expertise includes stroke and cardiovascular disease. He is a key collaborator in both the CARDIOH and IDeAS projects. To date, research outputs related to this project include publications, conference presentations, a partnership grant and research impact through development of a state-wide oral health brochure.



DR SHYAMA
RATNAYAKE

BN, MAppSc, PhD

Shyama is currently developing and implementing an educational program on nutrition and oral health with older people focusing on undergraduate nursing programs in Sri Lanka. She is currently receiving ECR mentorship from A/Prof Ajesh George and Dr Jed Montayne.



A/PROF
BRONWYN
EVERETT

BAppScNurs, MSc, PhD

Brownyn's primary research expertise lies in preventing and managing chronic disease. She is currently working on the CARDIOH and oral cancer projects, which have yielded significant research output including publications and conference presentations as well as international collaborations



A/PROF LUCIE
RAMJAN

BN(Hons), PhD

With expertise in child and adolescent health, mental health and educational research, Lucie is a key contributor to at least 3 projects at COHORT that reflect these areas of interest (CHEWI, eating disorders and Aboriginal maternal health). Her support has also contributed to publications, conferences and grants.



A/PROF NATHAN
WILSON

BN, BSS, MSc, PhD, GCertSc(Applied Statistics)

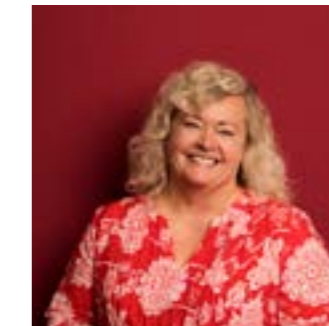
Nathan's research expertise is focused on the health, wellbeing and social participation of people with long term disabilities. Nathan is a long-standing collaborator with COHORT, targeting the improvement of oral health among people with intellectual disabilities. This collaboration has resulted in publications, a conference presentation, and funding for a summer scholar grant.



PROF YENNA
SALAMONSON

BSc, MA, GDipEd, PhD

Yenna's research is focused on building nursing workforce capacity and managing chronic diseases. She is currently working on the CARDIOH, IONIC projects and CIOH projects. These collaborations have resulted in several publications, conference presentations, and summer scholarships.



PROF HANNAH
DAHLEN

BN, MComN, PhD

With expertise in maternal and infant health Hannah has been a key investigator on the MIOH, PERIOH and BMIOH programs which have delivered high impact publications and attracted significant funding. This collaboration has also produced research impact both nationally and internationally.

ENGAGING CLINICIANS

SWSLHD



SALLY CLARK

Senior Dental Officer
Sally's research interest is on promoting oral health in residential aged care. Her link with COHORT was pivotal in the success of a research project in Bowral to explore this area of need. This collaboration was supported by funded research, resulting in publications and opportunities for conference presentations.



DIANA WISKICH

Dental Assistant
Diana played a key role in the recruitment and data collection on several of COHORT's projects including MIOH Kids, evaluating the MIOH program, and the Bulundidi Gudaga project.

NBMLHD



TANYA MAHONY

Oral Health Therapist
Tanya's research focus is on oral health in childhood. She played a key role in the project exploring the efficacy and acceptability of the 'Hall Technique'. Her contribution has resulted in two publications and a NBMLHD Quality Award in early childhood.



STEPHANIE NGUYEN

Dental Officer
Stephanie's expertise in antimicrobial stewardship has provided essential support in undertaking a research project exploring general practitioners' antibiotic prescription for dental issues.

ASSISTING DATA COLLECTION FOR SURVEYS



SWSLHD Dental Assistant Veronica Erdes collecting survey responses at Campbelltown Hospital

SUPPORTING MULTICENTRE CLINICAL TRIALS



MIOH team at Fairfield Hospital Dental Clinic

MIOH team at Ingleburn Community Oral Health Clinic



MIOH team at Nepean Centre for Oral Health



COHORT PARTNERSHIPS



NBMLHD Oral Health Services

Since 2017, the Nepean Blue Mountains Local Health District (NBMLHD) Oral Health Services have been working in partnership with COHORT. As part of this partnership, COHORT has assisted NBMLHD Oral Health Services with projects regarding both health services and integrated oral health. Over our three years working together, this partnership has produced nine publications, two conference presentations and one award.

A MESSAGE FROM THE DIRECTOR



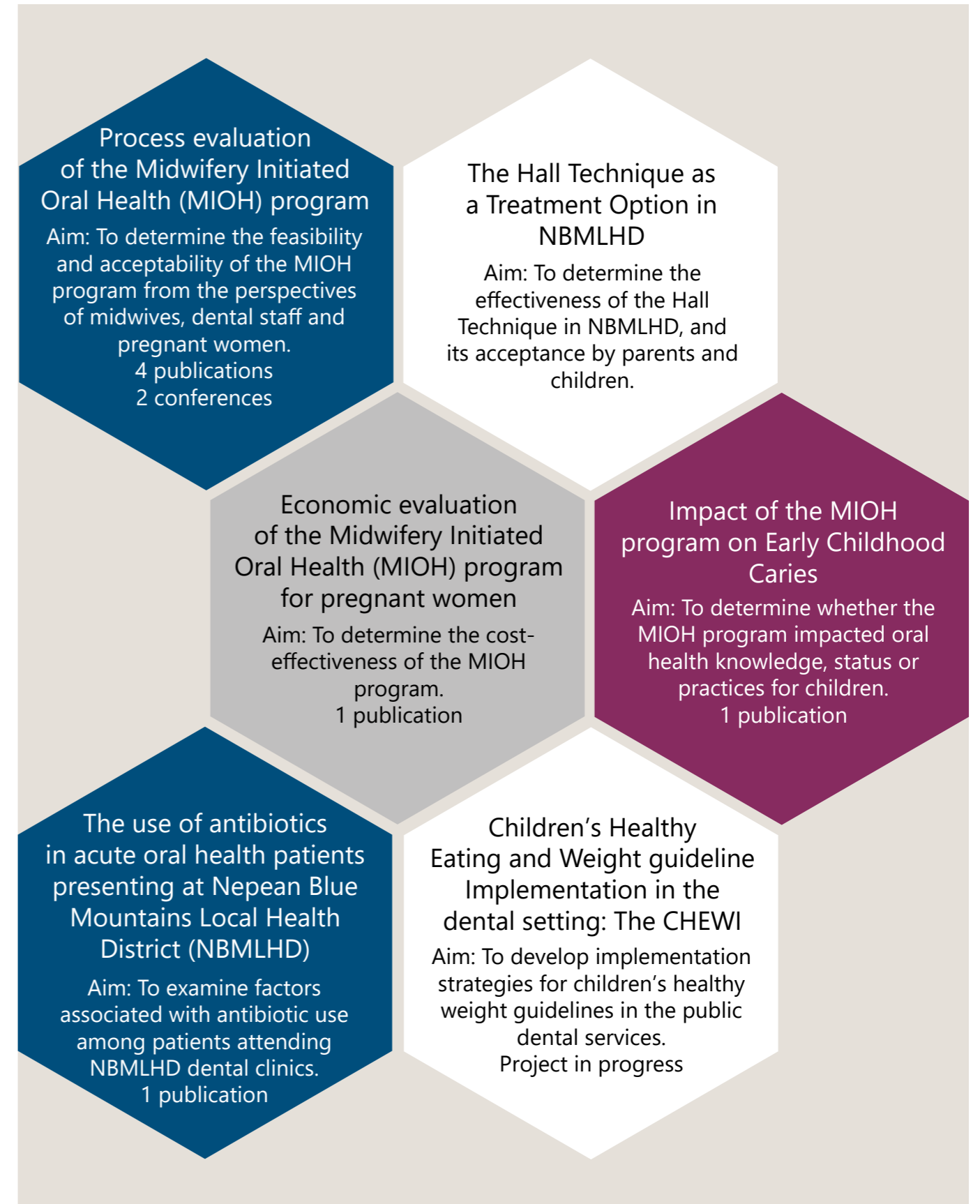
When NBMLHD was invited to join COHORT in 2017, we had minimal research capability and experience across our oral health service. Similar to many other dental services, research was not necessarily a priority at the time, however COHORT brought a wealth of experience and knowledge to our team, igniting and promoting interest in research. With the help of COHORT we have now several important research projects at various stages including several publications. Most importantly, the spirit of research and improvement has been embedded among our team and service. Thank you, and happy anniversary! - Dr Albert Yaacoub

NBMLHD QUALITY AWARDS

In 2019, the NBMLHD oral health services won a quality award for a primary school-based dental assessment program. COHORT provided assistance and training with the award application. As part of this program, dental and oral health therapists from NBMLHD oral health services travelled to various schools to provide oral health assessments, advice and referrals resulting in positive outcomes for children. The project team included Tanya Mahony, Albert Yaacoub and Catherine Smith.



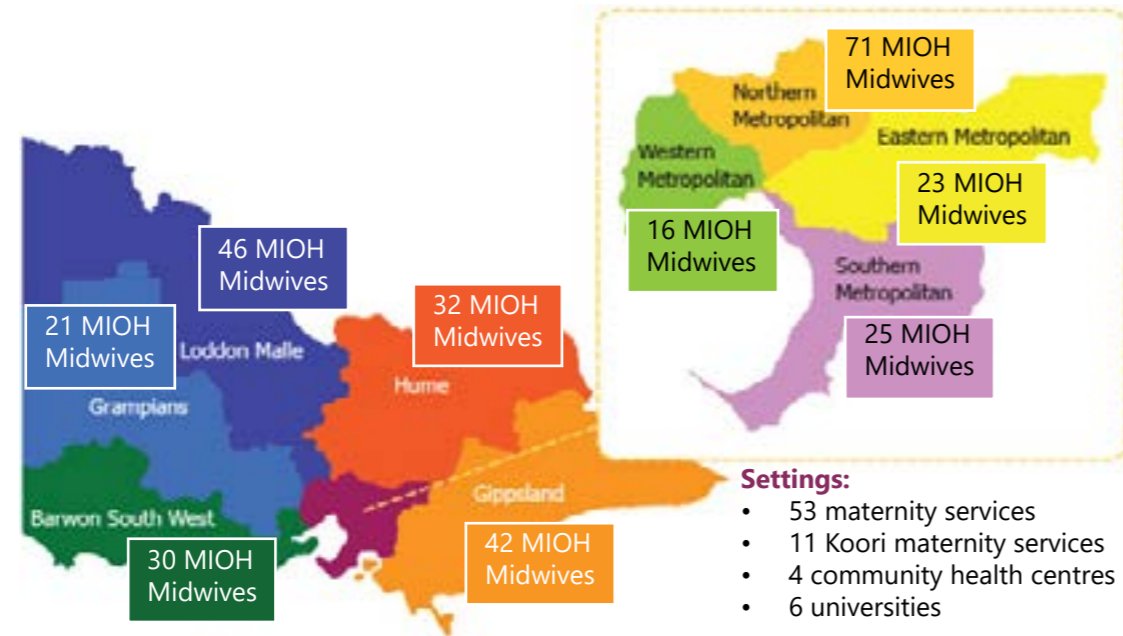
NBMLHD PROJECTS





Dental Health Services Victoria

The Healthy Families, Healthy Smiles team at Dental Health Services Victoria (DHSV) have been partnering with WSU/COHORT since 2013 to rollout the MIOH program across Victoria. This partnership resulted in 306 midwives completing the training program in the state, two joint publications and a national conference presentation. The MIOH-VIC project was also one of three finalists in the 2019 Victoria Public Healthcare Awards for improving maternal, child and family Health. DHSV is now working with COHORT to integrate oral health (BMIOH project) into undergraduate midwifery curriculum across Victorian universities.



Number of trained MIOH midwives by VIC region and setting

A MESSAGE FROM DHSV

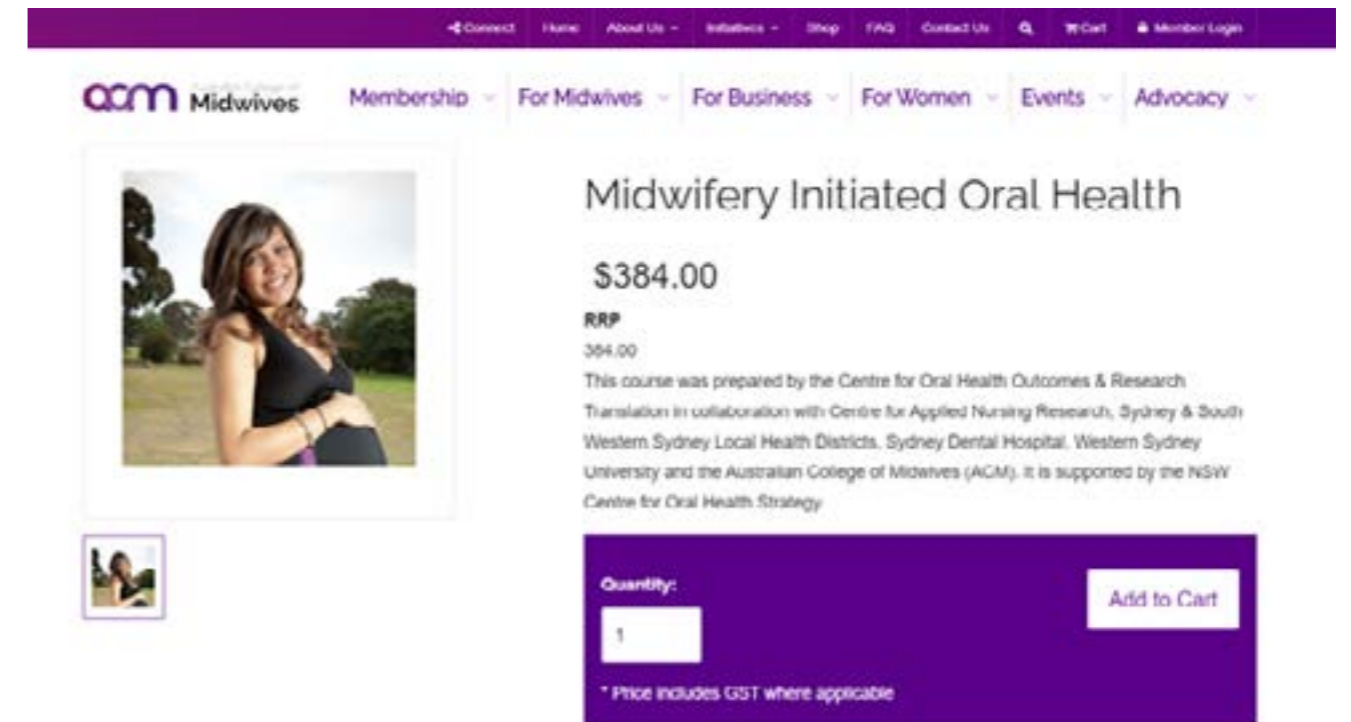


DHSV recognises the value of taking a life course approach to the prevention of oral disease and has identified pregnant women as an important priority group in our strategic plan. Working in collaboration with COHORT has enabled DHSV to engage midwives in oral health promotion, assessment and referral ensuring oral health is part of midwifery practice in Victoria. DHSV looks forward to continuing to work with COHORT to improve oral health outcomes in the community. - Mr. Mark Sullivan, Chief Operating Officer



Australian College of Midwives

In 2018 the Australian College of Midwives signed an MOU with COHORT/WSU to commercialise and host the MIOH training program as an e-learning course offering 16 CPD hours for midwives. This partnership is vital to build the capacity of midwives in oral health promotion nationally and has also led to international collaboration (Tanzania and Finland).

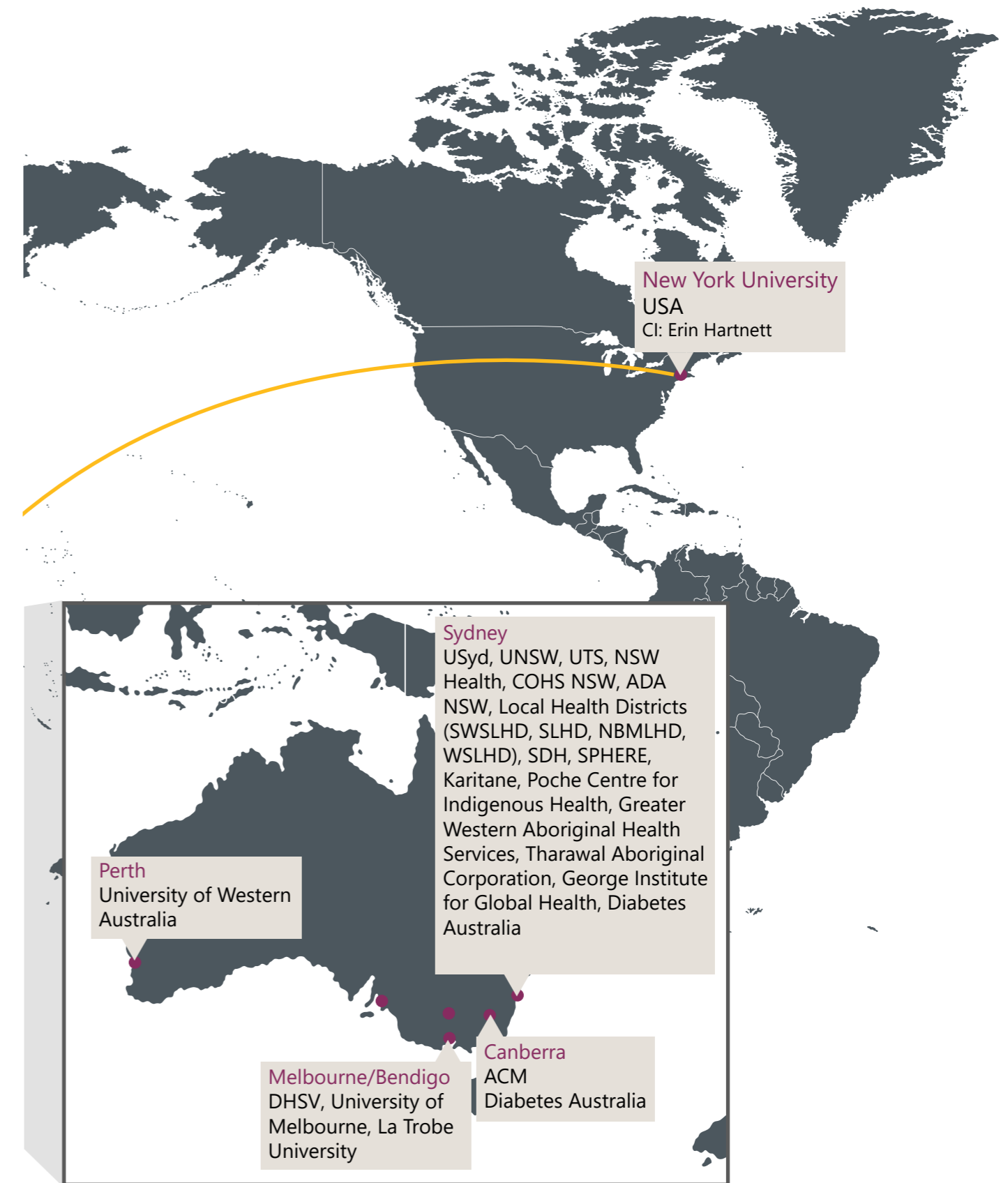


A MESSAGE FROM ACM



Working with Aresh and COHORT has highlighted the importance of midwives in the identification, treatment and prevention of oral health issues during pregnancy. Our partnership provides a unique opportunity to change the lives and health outcomes for Australian women and enhance the skills and knowledge of the midwifery workforce. We are proud to be partnered with the passion and expertise of the COHORT team as we build a future where oral health is central to maternity care - Ms Ruth King, Midwifery Advisor

WORKING TOGETHER: KEY COLLABORATIONS



RESEARCH TRANSLATION

AND IMPACT

Increased Community Awareness



COHORT has developed with collaborators a range of evidence-based resources to provide oral health information to consumers across NSW. These resources promote good oral health across various communities, life stages and disease states. They've been endorsed by NSW Health and to date, more than 216,000 have been distributed statewide. Consumers and clinicians can freely access these resources at www.health.nsw.gov.au/oralhealth/prevention/Pages/integrated.aspx

Informed Policy and Guidelines

The MIOH program was included in VIC Health's 2013-17 "Action Plan for Oral Health Promotion" and received funding for statewide implementation. A MIOH publication also informed the 2013 UK NICE Antenatal care guidelines.



Bringing MIOH to Parliament

In 2018, Ajesh George was invited to speak at parliament with ministers, MPs and industry representatives about the MIOH program



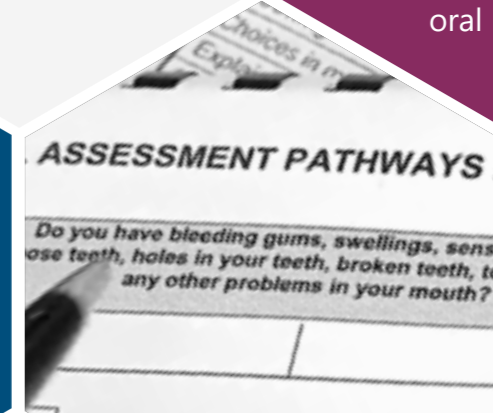
Capacity Building Midwives

Since endorsement by ACM, 466 midwives across Australia have completed the MIOH training program and significantly improved their knowledge and confidence to promote oral health



Midwifery Practice Change

The MIOH program was translated into practice in 59 maternity services across NSW/VIC. The MIOH screening tool is used by 75% of hospitals in Victoria, 4 antenatal practices in USA and included in statewide training in QLD



Improved Oral Health Outcomes

Since MIOH's implementation there was a 50% increase in pregnant women accessing public dental services in NSW/VIC



AWARDS

SWSLHD QUALITY AWARDS

2019 Keeping People Healthy: Promoting Oral health among Patients with Diabetes

Winner: WSU/SWSLHD.

Collaborators: WSLHD, NSLHD, USYD, NSW Health

2018 Excellence in Provision of Care and Service to Aboriginal Clients: Improving oral health care for Aboriginal children

Winner: WSU/SWSLHD

Collaborators: Tharawal AMS, KARI, UNSW, MQ

2015 Excellence in Provision of Care and Service to Aboriginal Clients: Partnering to improve oral health of Aboriginal children

Winner: WSU/SWSLHD

Collaborators: SLHD, Sydney Dental Hospital, UNSW, MQ, ACU, USYD, Tharawal AMS



2019 SWSLHD Quality Award (Winner)

Pictured: Cecelia Astorga, A/Prof Ajesh George, Prakash Poudel, A/Prof Ravi Srinivas



2018 NSW Health Quality Award (Finalist)

NSW HEALTH AWARD

2018 Keeping People Healthy: Improving Oral Health Care for Aboriginal Children

Finalist: WSU/SWSLHD

Collaborators: Tharawal AMS, KARI, UNSW, MQ

Pictured, left: A/Prof Rebekah Grace, A/Prof Ajesh George, Sheryl Sharkie, Prof Deborah Hatcher

INGHAM INSTITUTE APPLIED MEDICAL RESEARCH AWARDS

2018 Best Community & Population Health Paper Award

Winner: A/Prof Ajesh George

(pictured, right)



2018 Ingham Institute Awards (Winner)

VICE CHANCELLOR'S AWARD

2019 WSU Vice Chancellor's Award for Excellence in University Engagement and Sustainability: Student Individual

Winner: Prakash Poudel (PhD Candidate)

(Pictured, right: Prakash Poudel)



2019 Vice Chancellor's Award (Winner)



2016 Research Future's Forum School of Nursing & Midwifery (Winner)

Pictured: Prof Hannah Dahlen, Paula Sanchez

3MT COMPETITION

2018 Three Minute Thesis (3MT) Competition (School of Nursing & Midwifery)

Winner: Paula Sanchez (PhD Candidate)

RESEARCH FUTURE'S FORUM

2016 Research Future's Forum (School of Nursing & Midwifery): Best Junior Presenter

Winner: Paula Sanchez (PhD Candidate)

HIGHER DEGREE RESEARCH (HDR) SHOWCASE AWARD

2018 WSU HDR Showcase: Image Category

Winner: Tiffany Patterson Norrie (PhD Candidate)

(pictured, right)



2018 Higher Degree Research Showcase Award (Winner)

FUNDING

Year	Funding Body	Investigators	Amount
2020-2022	NBMLHD (Category 2)	George, A.	\$52,000
2020-2021	SWSLHD (Category 2)	Poudel, P., George, A., Hocking, S., Whitton, G., May, S., Srinivas, R.	\$8,563
2020	WSU (Category 3) Western to the World	Poudel, P., George, A., Griffiths, R., Wong, V. W., Arora, A.	\$22,800
2019-2020	WSU (Category 3)	Smith, B.	\$3,000
2019-2020	WSU (Category 3)	Sanchez, C.	\$3,000
2019-2020	WSU (Category 3)	Acharya, R.	\$3,000
2019-2023	Dental Health Services Victoria (Category 2)	George, A., Gillian, L., Ridge, A.	\$14,200
2019-2022	Spine Foundation (Category 3)	Ramjan, L., George, A., Everett, B., Salamonson, Y.	\$105,000
2019-2021	SWSLHD (Category 2)	George, A.	\$204,000
2019-2021	WSU (Category 3)	Villarosa, A., George, A.	\$24,000
2019-2021	NHMRC (Category 1)	Villarosa, A., George, A.	\$88,502
2019-2020	SPHERE Aboriginal Health & Wellbeing CAG (Category 3)	Kong, A., Sousa, M., George, A., Ramjan, L., Jones, N., Srinivas, S., Goulding, J., Moir, R., Rambaldini, B., Gwynne, K.	\$10,000
2018-2021	WSU (Category 3)	Kong, A.	\$90,000
2018-2019	WSU (Category 3)	Poudel, P.	\$60,000
2018-2019	SWSLHD (Category 2)	George, A., Villarosa, A., Ramjan, L., Salamonson, Y., Everett, B.	\$31,178
2018-2019	SWSLHD (Category 2)	Eapen, V., Lingham, R., Whitehall, J., Raman, S., Kemp, L., George, A., Page, A., Jalaludin, G., Teng-Liaw, S., Woolfenden, S., Kohlhoff, J., Leeuw, E. D., Baker, J.	\$1,050,000
2018-2019	SPHERE Age and Ageing CAG (Category 3)	Poulos, R., Boon, MY., Flowers, K., George, A., Lui, K., Watson, K., Poulos, C., Simpson, P.	\$29,992
2018-2019	WSU, SLHD & Sydney Dental Hospital (Category 2)	Ferguson, C., Ajwani, S., George, A.	\$13,972

Year	Funding Body	Investigators	Amount
2018-2019	SWSLHD (Category 2)	Kong (nee Villarosa), A. C., George, A., Sousa, M., Ramjan, L. M.	\$10,000
2018-2019	SWSLHD (Category 2)	Villarosa, A., George, A.	\$17,753
2018-2019	WSU, NSW Central for Oral Health Strategy & WSLHD (Category 2)	George, A., Poudel, P., Griffiths, R., Wong, V. W., Arora, A., Flack, J.R., Khoo, C. L.	\$5,000
2018-2019	WSU (Category 3)	George, D.	\$3,000
2017-2020	NBMLHD (Category 2)	George, A.	\$75,000
2017-2018	SWSLHD (Category 3)	Baker, J., Kohlhoff, J., Eapen, V., George, A., Arora, A., Al-Shammari, A.	\$18,904
2017-2018	SWSLHD (Category 2)	George, A., Villarosa, A.	\$29,432
2017-2018	WSU (Category 3)	George, D.	\$3,000
2017	WSU (Category 3)	George, A.	\$9,996
2016-2019	Dental Health Services Victoria (Category 2)	George, A., Gillian, L., Ridge, A.	\$24,000
2016-2018	The Financial Markets Foundation for Children (Category 1)	George, A., Johnson, M., Dahlen, H.	\$117,310
2016-2017	SWSLHD (Category 2)	George, A., Villarosa, A., Srinivas, R., Nguyen, R., Patel, A., Smidt, K.	\$21,335
2016-2017	SWSLHD (Category 2)	George, A., Srinivas, R., Parker, D., Agar, M., Wiltshire, J., Harlum, J., Villarosa, A., Smidt, K.	\$18,810
2016-2017	SWSLHD (Category 2)	Clark, S., Valderrama, C., Anlezark, J., Smidt, K., Wiskich, D., Macdonald, S., Villarosa, A., George, A.	\$5,000
2016-2017	WSU (Category 3)	Lin, Z.	\$3,000
2015-2018	WSU (Category 3)	Sanchez, P.	\$78,000
2015-2017	NSW Centre for Oral Health Strategy (Category 2)	Dixon, C., George, A., Schinkewitsch, T., Lewis, N., Kohloff, J., Vlahos, S., Itaoui, R.	\$28,580
2015-2016	WSU (Category 3)	Farley, J.	\$3,000
2015	SWSLHD (Category 2)	George, A.	\$26,839

PUBLICATIONS

ABORIGINAL HEALTH

- George, A., Villarosa, A. R., Ingram, S., Fatema, K., Elliott, K., Grace, R., Kemp, L., Scharkie, S., Anderson, C., & Bucknall, N. (2020). Oral health status, behaviours, food and beverage consumption of aboriginal children in Australia. *Health Promotion Journal of Australia*.
- Kong, A. C., Sousa, M. S., Ramjan, L., Dickson, M., Goulding, J., Gwynne, K., Talbot, F., Jones, N., Srinivas, R., & George, A. (2020). "Got to build that trust": Aboriginal health workers' perspectives and experiences of maternal oral health. *International Journal for Equity in Health*.
- Kong, A. C., Ramjan, L., Sousa, M. S., Gwynne, K., Goulding, J., Jones, N., Srinivas, R., Rambaldini, B., Moir, R., & George, A. (2020). The oral health of Indigenous pregnant women: A mixed-methods systematic review. *Women and Birth*, 33(4), 311-322.
- Kemp, L., Grace, R., Comino, E., Pulver, L. J., McMahon, C., Harris, E., Harris, M., George, A., & Mack, H. A. (2018). The effectiveness of a sustained nurse home visiting intervention for Aboriginal infants compared with non-Aboriginal infants and with Aboriginal infants receiving usual child health care: A quasi-experimental trial-the Bulundidi Gudaga study. *BMC Health Services Research*, 18(1), 599.
- Villarosa, A. C., Villarosa, A. R., Salamonson, Y., Ramjan, L. M., Sousa, M. S., Srinivas, R., Jones, N., & George, A. (2018). The role of Indigenous health workers in promoting oral health during pregnancy: A scoping review. *BMC Public Health*, 18(1), 381.
- George, A., Grace, R., Elcombe, E., Villarosa, A. R., Mack, H. A., Kemp, L., Ajwani, S., Wright, D. C., Anderson, C., & Bucknall, N. (2018). The oral health behaviours and fluid consumption practices of young urban Aboriginal preschool children in south-western Sydney, New South Wales, Australia. *Health Promotion Journal of Australia*, 29(1), 23-30.

AGED & PALLIATIVE CARE

- Kong, A. C., George, A., Villarosa, A. R., Agar, M., Harlum, J., Wiltshire, J., Srinivas, R., & Parker, D. (2020). Perceptions of nurses towards oral health in palliative care: A qualitative study. *Collegian*.
- Patterson Norrie, T., Villarosa, A. R., Kong, A. C., Clark, S., Macdonald, S., Srinivas, R., Anlezark, J., & George, A. (2020). Oral health in residential aged care: Perceptions of nurses and management staff. *Nursing Open*, 7(2), 536-546.
- Villarosa, A. R., Wang, D., & George, A. (2018). Oral health in residential aged care: Are nurses bearing the brunt of a multidisciplinary solution? *Australian Nursing and Midwifery Journal*, 25(7), 46-46.
- Villarosa, A. R., Clark, S., Villarosa, A. C., Patterson Norrie, T., Macdonald, S., Anlezark, J., Srinivas, R., & George, A. (2018). Promoting oral health care among people living in residential aged care facilities: Perceptions of care staff. *Gerodontology*, 35(3), 177-184.

CANCER

- Saraswat, N., Pillay, R., Everett, B., & George, A. (2020). Knowledge, attitudes and practices of South Asian immigrants in developed countries regarding oral cancer: An integrative review. *BMC Cancer*, 20(1), 477.
- Saraswat, N., Everett, B., Pillay, R., Prabhu, N., & George, A. (2020). Knowledge, attitudes and practices of general medical practitioners in developed countries regarding oral cancer: An integrative review. *Family practice*, cmaa026

CARDIOVASCULAR HEALTH

- Sanchez, P., Everett, B., Salamonson, Y., Redfern, J., Ajwani, S., Bhole, S., Bishop, J., Lintern, K., Nolan, S., & Rajaratnam, R. (2019). The oral health status, behaviours and knowledge of patients with cardiovascular disease in Sydney Australia: A cross-sectional survey. *BMC Oral Health*, 19(1), 12.
- Sanchez, P., Salamonson, Y., Everett, B., & George, A. (2019). Barriers and predictors associated with accessing oral healthcare among patients with cardiovascular disease in Australia. *Journal of Cardiovascular Nursing*, 34(3), 208-214.
- Sanchez, P., Everett, B., Salamonson, Y., Ajwani, S., Bhole, S., Bishop, J., Lintern, K., Nolan, S., Rajaratnam, R., & Redfern, J. (2018). Perceptions of cardiac care providers towards oral health promotion in Australia. *Collegian*, 25(5), 471-478.
- Sanchez, P., Everett, B., Salamonson, Y., Ajwani, S., Bhole, S., Bishop, J., Lintern, K., Nolan, S., Rajaratnam, R., & Redfern, J. (2017). Oral health and cardiovascular care: Perceptions of people with cardiovascular disease. *PloS one*, 12(7), e0181189.
- Sanchez, P., Everett, B., Salamonson, Y., Ajwani, S., & George, A. (2017). Oral healthcare and cardiovascular disease: A scoping review of current strategies and implications for nurses. *Journal of Cardiovascular Nursing*, 32(3), E10-E20.

DIABETES

- Poudel, P., Griffiths, R., Wong, V. W., Arora, A., Flack, J. R., Khoo, C. L., & George, A. (2020). Perceptions and practices of general practitioners on providing oral health care to people with diabetes-A qualitative study. *BMC Family Practice*, 21(1), 1-11.
- Poudel, P., Griffiths, R., Wong, V. W., Arora, A., Flack, J. R., Khoo, C. L., & George, A. (2018). Perceptions and practices of diabetes educators in providing oral health care: A qualitative study. *The Diabetes Educator*, 44(5), 454-464.
- Poudel, P., Griffiths, R., Wong, V. W., Arora, A., Flack, J. R., Khoo, C. L., & George, A. (2018). Oral health knowledge, attitudes and care practices of people with diabetes: A systematic review. *BMC Public Health*, 18(1), 577.
- Poudel, P., Griffiths, R., Wong, V. W., Arora, A., & George, A. (2017). Knowledge and practices of diabetes care providers in oral health care and their potential role in oral health promotion: A scoping review. *Diabetes Research and Clinical Practice*, 130, 266-277.

DISABILITY

- Wilson, N. J., Lin, Z., Villarosa, A., Lewis, P., Philip, P., Sumar, B., & George, A. (2019). Countering the poor oral health of people with intellectual and developmental disability: A scoping literature review. *BMC Public Health*, 19(1), 1530.
- Wilson, N. J., Lin, Z., Villarosa, A., & George, A. (2019). Oral health status and reported oral health problems in people with intellectual disability: A literature review. *Journal of Intellectual & Developmental Disability*, 44(3), 292-304.

HEALTH SERVICES

- Yaacoub, A., Mahony, T., Sapountzis, F., Villarosa, A. R., Dwyer, C., & George, A. (2019). Acceptability of the 'Hall Technique' as a treatment option within public dental health clinics in the Western Sydney Region: Sydney, NSW Australia. *Australian and New Zealand Journal of Dental and Oral Health Therapy*, 17-23.
- Philip, P., Villarosa, A., Gopinath, A., Elizabeth, C., Norman, G., & George, A. (2019). Oral health knowledge, attitude and practices among nurses in a tertiary care hospital in Bangalore, India: A cross-sectional survey. *Contemporary Nurse*, 55(2-3), 261-274.

INTERPROFESSIONAL EDUCATION

- George, A., Rojo, J., Alomari, A., Marks, A., Villarosa, A., & Kong, A. (2020). Oral Health Matters: Enhancing the undergraduate nursing curriculum. *Australian Nursing and Midwifery Journal*, 26(9), 46-46.
- George, A., Kong, A. C., Villarosa, A., Duff, M., Sheehan, A., Burns, E., Priddis, H., Chua, C., & Dahlen, H. G. (2020). Implementing and evaluating the effectiveness of an oral health module for the bachelor of midwifery program at an Australian university. *Nurse Education Today*, 104457.
- Duff, M., Dahlen, H. G., Burns, E., Priddis, H., Schmied, V., & George, A. (2017). Designing an oral health module for the Bachelor of Midwifery program at an Australian University. *Nurse Education in Practice*, 23, 76-81.
- Veale, M., Ajwani, S., Johnson, M., Nash, L., Patterson, T., & George, A. (2016). The early childhood oral health program: A qualitative study of the perceptions of child and family health nurses in South Western Sydney, Australia. *BMC Oral Health*, 16(1), 1-10.

MATERNITY

- Dahlen, H. G., Johnson, M., Hoolsema, J., Norrie, T. P., Ajwani, S., Blinkhorn, A., Bhole, S., Ellis, S., Srinivas, R., Yaacoub, A., Milat, A., Skinner, J., & George, A. (2019). Process evaluation of the midwifery initiated oral health-dental service program: Perceptions of midwives in Greater Western Sydney, Australia. *Women Birth*, 32(2), e159-e165.
- George, A., Villarosa, A. R., Patterson Norrie, T., Hoolsema, J., Dahlen, H. G., Ajwani, S., Bhole, S., Blinkhorn, A., Srinivas, R., Yaacoub, A., Milat, A., Skinner, J., & Johnson, M. (2019). Process evaluation of the midwifery initiated oral health-dental service program: Perceptions of pregnant women. *Australian Dental Journal*, 64(1), 55-65.
- Ajwani, S., Sousa, M. S., Villarosa, A. C., Bhole, S., Johnson, M., Dahlen, H. G., Hoolsema, J., Blinkhorn, A., Srinivas, R., Yaacoub, A., Milat, A., Skinner, J., & George, A. (2019). Process evaluation of the midwifery initiated oral health-dental service program: Perceptions of dental professionals. *Health Promotion Journal of Australia*, 30(3), 333-343.
- George, A., Dahlen, H. G., Blinkhorn, A., Ajwani, S., Bhole, S., Ellis, S., Yeo, A., Elcombe, E., & Johnson, M. (2018). Evaluation of a midwifery initiated oral health-dental service program to improve oral health and birth outcomes for pregnant women: A multi-centre randomised controlled trial. *International Journal of Nursing Studies*, 82, 49-57.
- George, A., Ajwani, S., Bhole, S., Dahlen, H. G., Reath, J., Korda, A., Ng Chok, H., Miranda, C., Villarosa, A., & Johnson, M. (2017). Knowledge, attitude and practises of dentists towards oral health care during pregnancy: A cross sectional survey in New South Wales, Australia. *Australian Dental Journal*, 62(3), 301-310.
- George, A., Dahlen, H. G., Reath, J., Ajwani, S., Bhole, S., Korda, A., Chok, H. N., Miranda, C., Villarosa, A., & Johnson, M. (2016). What do antenatal care providers understand and do about oral health care during pregnancy: A cross-sectional survey in New South Wales, Australia. *BMC Pregnancy and Childbirth*, 16(1), 382.
- George, A., Dahlen, H. G., Blinkhorn, A., Ajwani, S., Bhole, S., Ellis, S., Yeo, A., Elcombe, E., Sadozai, A., & Johnson, M. (2016). Measuring oral health during pregnancy: Sensitivity and specificity of a maternal oral screening (MOS) tool. *BMC Pregnancy and Childbirth*, 16(1), 1-6.
- George, A., Lang, G., Johnson, M., Ridge, A., De Silva, A. M., Ajwani, S., Bhole, S., Blinkhorn, A., Dahlen, H. G., & Ellis, S. (2016). The evaluation of an oral health education program for midwives in Australia. *Women and Birth*, 29(3), 208-213.
- Heilbrunn-Lang, A. Y., De Silva, A. M., Lang, G., George, A., Ridge, A., Johnson, M., Bhole, S., & Gilmour, C. (2015). Midwives' perspectives of their ability to promote the oral health of pregnant women in Victoria, Australia. *BMC Pregnancy and Childbirth*, 15(1), 1-11.

- Johnson, M., George, A., Dahlen, H., Ajwani, S., Bhole, S., Blinkhorn, A., Ellis, S., & Yeo, A. (2015). The midwifery initiated oral health-dental service protocol: An intervention to improve oral health outcomes for pregnant women. *BMC Oral Health*, 15(1), 2.
- George, A., Ajwani, S., Johnson, M., Dahlen, H., Blinkhorn, A., Bhole, S., Ellis, S., Zheng, C., & Dawes, W. (2015). Developing and testing of an oral health screening tool for midwives to assess pregnant woman. *Health Care for Women International*, 36(10), 1160-1174.
- Ajwani, S., Bhole, S., Anderson, C., Tastula C., Canham, B., George, A (2018) Oral care after stroke: perceptions of patients in Sydney. *Journal of Dental Research*, 97 (Special Issue B):
- Sanchez, P., Salamonson, Y., Everett, B., Ajwani, S., Bhole, S., Srinivas, R., George, A. (2017). New model of oral healthcare for cardiac settings in Australia. *Journal of Dental Research*, 96 (Special Issue C)
- Ajwani, S. Bhole, B, . Anderson, C., Tastula, K., Canham, B., & George, A., (2017) Oral care post stroke – perceptions of non-dental professionals in Sydney. *Journal of Dental Research*, 96 (Special Issue A)

MENTAL HEALTH

- Patterson Norrie, T., Ramjan, L., Sousa, M., Sank, L., George, A. (2020- inpress). Eating disorders and Oral Health - A scoping review on the role of Dietitians. *Journal of Eating Disorders*.

OBESITY

- Villarosa, A. R., Maneze, D., Ramjan, L. M., Srinivas, R., Camilleri, M., & George, A. (2019). The effectiveness of guideline implementation strategies in the dental setting: A systematic review. *Implementation Science*, 14(1), 106.
- Villarosa, A. R., George, D., Ramjan, L. M., Srinivas, R., & George, A. (2018). The role of dental practitioners in addressing overweight and obesity among children: A scoping review of current interventions and strategies. *Obesity Research and Clinical Practice*, 12(5), 405-415.

PAEDIATRICS

- George, A., Sousa, M. S., Kong, A. C., Blinkhorn, A., Norrie, T. P., Foster, J., Dahlen, H. G., Ajwani, S., & Johnson, M. (2019). Effectiveness of preventive dental programs offered to mothers by non-dental professionals to control early childhood dental caries: A review. *BMC oral health*, 19(1), 172.
- Alqudah, M. A., Qudah, B., Cowin, L. S., George, A., & Johnson, M. (2019). Understanding presentations of children with fever to a Sydney emergency department. *Journal of Nursing Research and Practice*.
- Baker, J. R., Raman, S., Kohlhoff, J., George, A., Kaplun, C., Dadich, A., Best, C. T., Arora, A., Zwi, K., & Schmied, V. (2019). Optimising refugee children's health/wellbeing in preparation for primary and secondary school: A qualitative inquiry. *BMC Public Health*, 19(1), 812.
- Alqudah, M., Cowin, L., George, A., & Johnson, M. (2019). Child fever management: A comparative study of Australian parents with limited and functional health literacy. *Nursing & Health Sciences*, 21(2), 157-163.

STROKE

- Ferguson, C., George, A., Villarosa, A. R., Kong, A. C., Bhole, S., & Ajwani, S. (2019). Exploring nursing and allied health perspectives of quality oral care after stroke: A qualitative study. *European Journal of Cardiovascular Nursing*.
- Ajwani, S., Jayanti, S., Burkolter, N., Anderson, C., Bhole, S., Itaoui, R., & George, A. (2017). Integrated oral health care for stroke patients–A scoping review. *Journal of Clinical Nursing*, 26(7-8), 891-901.

CONFERENCE PRESENTATIONS

ABORIGINAL HEALTH

- Kong, A., George, A., Ramjan, L., Sousa, M., Goulding, J., & Dickson, M. (2019) Capacity building Aboriginal health workers in oral health promotion: A new model of care for Indigenous pregnant women. Indigenous Research Forum. 25th October 2019, Western Sydney University (Parramatta Campus).
- Kong, A., George, A., Ramjan, L., Sousa, M., Goulding, J., & Dickson, M. (2019) Working together with Aboriginal Health Workers to promote oral health in an enhanced model of care for pregnant women. The 8th Annual Poche Indigenous Health Network Research Showcase. 17th October 2019, The University of Sydney.
- Kong, A., Dixon, S., Ramjan, L., Sousa, M. S., Goulding, J., Jones, N., Srinivas, R., Gwynne, K., Moir, R., Rambaldini, B., & George, A. (2019) Co-designing an oral health model of care for Aboriginal pregnant women: Exploring the needs of Aboriginal Health Workers. The Inaugural Joanna Briggs Collaboration Regional Symposium in Evidence-based Healthcare. 28th June 2019, St George Hospital, Kogarah.
- Kong, A., Goulding, J., Ramjan, L., Sousa, M., Jones, N., Srinivas, R., Gwynne, K., Moir, R., Rambaldini, B., & George, A. (2019) Empowering Aboriginal and Torres Strait Islander women to improve oral health during pregnancy: Can we adapt a model? The Lowitja Institute International Indigenous Health and Wellbeing Conference. 18-20th June 2019, Darwin Convention Centre, Darwin.
- Villarosa, A. C., Villarosa, A. R., Salamonson, Y., Ramjan, L. M., Sousa, M. S., Srinivas, R., Jones, N., & George, A. (2019) A scoping review on whether Indigenous health workers can promote oral health during pregnancy. Health Beyond Research & Innovation Showcase. 5-6th June 2019, William Inglis Hotel, Warwick Farm.
- Villarosa, A., Sousa, M., Ramjan, L., Jones, N., Srinivas, R., Goulding, J., Rambaldini, B., Moir, R., & George, A. (2019) Improving the antenatal oral health of Aboriginal pregnant women—A community-driven model. The 4th Australian Nursing and Midwifery Conference. 2-3rd May 2019, Newcastle Convention Centre, Newcastle.
- Villarosa, A.C., Villarosa, A.R., Salamonson, Y., Ramjan, L.M., Sousa, M.S., Srinivas, R., Jones, N., & George, A. (2018) A scoping review on whether Indigenous health workers can promote oral health during pregnancy. Health Beyond Research & Innovation Showcase. 6-7th June 2018, William Inglis Hotel, Warwick Farm, Australia.
- Villarosa, A. C., Ramjan, L. M., Villarosa, A. R., Salamonson, Y., Sousa, M.S., & George, A. (2017) The role of health workers from First Peoples communities in promoting oral health during antenatal care: A scoping review. Songlines: Our Languages Matter. [Poster Session]. 23-24th October 2017, Sydney, Australia.
- George, A., Grace, R., Elcombe, E., Villarosa, A. R., Mack, H.A., Kemp L., Ajwani, S., Wright, D.C., Anderson C., Bucknall, N., & Comino, E. (2017) What are the oral health behaviours and fluid consumption practices of young urban Aboriginal preschool children in South-Western Sydney? Health Beyond Research & Innovation Showcase. 7th June 2017, Campbelltown Catholic Club.

AGED CARE & PALLIATIVE CARE

- George, A., Villarosa, A.C., Villarosa, A.R., Srinivas, R., Parker, D., Harlum, J.H., Wiltshire, J., & Agar, M. (2019) Integrating oral health into palliative care: Perceptions of nursing, medical and dental care providers. 6th Public Health Palliative Care International Conference. 13-16th October 2019, Blue Mountains, Sydney, Australia

- George, A., Kong, A. C., Srinivas, R., Agar, M., Harlum, J. H., Parker, D., Wiltshire, J., & Villarosa, A. R. (2019) Oral health care for palliative care patients: Perceptions of dentists in south western Sydney. Health Beyond Research & Innovation Showcase. 5-6th June 2019, William Inglis Hotel, Warwick Farm.
- Clark, S., Patterson Norrie, T., Villarosa, A., Wiskich, D., Smidt, K., Anlezark, J., Macdonald, S., & George, A. (2017) Management staff perceptions of strategies to improve the oral health outcomes for people living with disability in residential aged care. Health beyond research and innovation showcase. 6-7th June 2017, Sydney, Australia.
- Clark, S., Patterson Norrie, T., Villarosa, A. R., Wiskich, D., Smidt, K., Anlezark, J., Macdonald, S., & George, A. (2017) Improving oral health among residential aged care residents- Perceptions of Management staff. Health Beyond Research & Innovation Showcase. 7th June 2017, Campbelltown Catholic Club.
- Clark, S., Villarosa, A. R., Wiskich, D., Smidt, K., Anlezark, J., Macdonald, S., & George, A. (2017) Developing strategies to improve the oral health outcomes for people living with disability in residential aged care facilities: The perspectives of nursing and care staff. Health Beyond Research & Innovation Showcase. 7th June 2017, Campbelltown Catholic Club.

CANCER

- Saraswat, N., Everett, B., Pillay, R., & George, A. (2019) General medical practitioners' views towards oral cancer: A systematic review. International Association for Dental Research Asia-Pacific Region 2019. 28-30th November 2019, Brisbane, Australia.
- Saraswat, N., Everett, B., Pillay, R., & George, A. (2019) Oral cancer risk knowledge, attitudes and practices of South Asian immigrants in developed countries. Joanna Briggs Inaugural Symposium. 28th June 2019, St. George Hospital, Kogarah, Australia.
- Saraswat, N., Everett, B., Pillay, R., & George, A. (2019) Oral cancer risk behaviours among South Asian immigrants- The current state in developed countries of the world. Health Beyond Research & Innovation Showcase. 5-6th June 2019, William Inglis Hotel, Warwick Farm, Australia.

CARDIOVASCULAR

- Sanchez, P., George, A., Everett, B., Salamonson, Y., Ajwani, S., Bhole, S., & Srinivas, R. (2019) Integrating oral health into cardiac care settings in Australia: A feasibility study. 2nd Asia Pacific Conference on Integrated Care 2019. 11-13th November 2019, Melbourne, Australia.
- Ajwani, S., & George, A. (2018) Oral health care in hospitals post cardiac event and stroke. Sydney Local Health District Innovation and Research Symposium. 21st June 2018, Australian Technology Park (ATP), Eveleigh, Sydney.
- George, A. (2018) Developing a Cardiovascular Oral Health (CARDIOH) program in South Western Sydney. Cardiac Research Institute Brainstorming session. 23rd March 2018, Liverpool Hospital, Sydney.
- Sanchez, P., George, A., Everett, B., & Salamonson, Y. (2018) Do nurses have a role in promoting oral health in the cardiac setting? Health Beyond Research & Innovation Showcase. 6-7th June 2018, William Inglis Hotel, Warwick Farm, Australia.
- Sanchez, P., Everett, B., Salamonson, Y., Bishop, J., Lintern, K., Nolan, S., Rajaratnam, R., Redfern, J., Sheehan, M., Skarligos, F., Spencer, L., & George, A. (2017) Factors affecting access to oral healthcare for patients with cardiovascular disease in Australia. The American Heart Association Annual Meeting 2017 [Poster Session]. 11-15th November 2017, Anaheim, California, USA.
- Sanchez, P., Everett, B., Salamonson, Y., & George, A. (2017) Developing a cardiovascular oral health (CARDIOH) program for nurses: A needs assessment. WSU School of Nursing and Midwifery Research Future's Forum. 26-27th October 2017, Western Sydney University, Parramatta, Australia.

- Sanchez, P., Salamonson, Y., Everett, B., Ajwani, S., Bhole, S., Srinivas, R., & George, A. (2017) New model of oral healthcare for cardiac settings in Australia [Poster Session]. 11th IADR World Congress on Preventative Dentistry (WCPD). 3-6th October 2017, New Delhi, India.
- Sanchez, P., Everett, B., Salamonson, Y., & George, A. (2017) Promoting oral health in the cardiac setting: Is it important and possible? Ingham Institute Research Seminar Presentations. 12th September 2017, IIMR, Liverpool, Australia.
- Sanchez, P., George, A., Everett, B., Salamonson, Y., Ajwani, S., Bhole, S., Bishop, J., Lintern, K., Nolan, S., Rajaratnam, R., Redfern, J., Sheehan, M., Skarligos, F., Spencer, L., & Srinivas, R. (2017) Oral health care and cardiac care clinicians: Current practices and future direction. Australian Cardiovascular Health and Rehabilitation Association ACRA 2017 Annual Scientific Meeting. 7-9th August 2017, Perth, Australia.
- Sanchez, P., George, A., Everett, B., & Salamonson, Y. (2017) Needs assessment for the development of a cardiovascular oral health (CARDIOH) program for nurses. Research & Health Beyond Innovation Showcase 2017. SWSLHD & IIMR. 7-8th June 2017, Campbelltown Catholic Club, Sydney, Australia.
- Sanchez, P., George, A., Everett, B., Salamonson, Y., Ajwani, S., Bhole, S., Bishop, J., Lintern, K., Nolan, S., Rajaratnam, R., Redfern, J., Sheehan, M., Skarligos, F., Spencer, L., & Srinivas, R. (2017) Oral health care and cardiac care clinicians: Current practices and future direction. The Australian Cardiovascular Health and Rehabilitation Association Conference. 7-9th August 2017, Perth, Australia.
- Sanchez, P., George, A., Everett, B., & Salamonson, Y. (2016) Oral health care and cardiovascular disease: Perceptions of cardiac care clinicians in Sydney. Australia Beyond Research and Teaching showcase. 18-19th October 2016, Liverpool Catholic Club, Sydney.
- Sanchez, P., George, A., Everett, B., Salamonson, Y., Ajwani, S., Bhole, S., Lintern, K., Rajaratnam, R., Redfern, J., Sheehan, M., Skarligos, F., Spencer, L., & Srinivas, R. (2016) Promoting oral health in the cardiac setting: Perception of cardiovascular patients. The Australian Cardiovascular Health and Rehabilitation Association Conference. 1-3rd August 2016, Adelaide, Australia.
- Sanchez, P., George, A., Everett, B., Salamonson, Y., & Ajwani, S. (2015) Developing a Cardiovascular Oral Health (CARDIOH) promotion program for the cardiac rehabilitation setting: Findings from a scoping review. Australasian Cardiovascular Nurses College 9th Annual Scientific Meeting. 13-14th March 2015, Coogee, NSW Australia.

DIABETES

- Poudel, P., Griffiths, R., Wong, V., Arora, A., Flack, J.R., Khoo, C.L., & George, A. (2019) Oral health care for people with diabetes: Perceptions, practices and barriers of General Practitioner. Australasian Diabetes Congress 2019. 21-23rd August 2019, Sydney.
- Poudel, P., Griffiths, R., Wong, V.W., Arora, A., Flack, J.R., Khoo, C.L., & George, A. (2019) Perspectives of General Practitioners towards oral health care of people with diabetes- A qualitative study. Health Beyond Research and Innovation Showcase. 5-6th June 2019, The William Inglis Hotel, Warwick Farm, Australia.
- George, A. (2018) Interdisciplinary oral health care among patients with Diabetes: Is it possible? A symposium on Diabetes and Oral Health. 22nd February 2018, Western Sydney Diabetes, Blacktown Hospital, Sydney.
- Poudel, P., Griffiths, R., Wong V.W., Arora, A., Flack, J.R., Khoo, C.L., & George, A. (2018) Oral health care and diabetes: Perceptions and practices of diabetes educators in South-Western Sydney. Australasian Diabetes Congress 2018, ADS and ADEA Annual Scientific Meeting. 22-24th August 2018, Adelaide Convention Centre, Adelaide, Australia.
- Poudel, P., Griffiths, R., Wong, V.W., Arora, A., & George, A. (2017) Oral health knowledge, attitude, and practices of people with diabetes - A systematic review. Health Beyond Research and Innovation Showcase. 7-8th June 2017, Campbelltown Catholic Club, Campbelltown, Australia.

- Poudel, P., George, A., Griffiths, R., Wong, V., & Arora, A. (2016) Oral health care for people with Diabetes: A scoping review. Health Beyond Research and Teaching Showcase. 18-19th October 2016, Liverpool Catholic Club, Sydney.
- Poudel, P., George, A., Griffiths, R., Wong, V., & Arora, A. (2016) Diabetes and oral health care: A scoping review. Australian Diabetes Society and Australian Diabetes Educators Association Annual Scientific Meeting. 24-26th August 2016, Gold Coast, Australia.

DISABILITY

- Wilson, N., Lin, Z., Villarosa, A. R., & George, A. (2017) The oral health status and reported oral health problems in people with intellectual disability. Health Beyond Research & Innovation Showcase. 7th June 2017, Campbelltown Catholic Club.

HEALTH SERVICES

- Poulos, R., Boon, M.Y., George, A., Liu, K., May, M., Maurice, M., Palesy, D., Pont, L., Poulos, C., Ramsey, S., Simpson, P., Steiner, G.Z., Villarosa, A., Watson, K., & Parker, D., (2020) Developing multidisciplinary core competencies for the Australian health and aged care workforce. 53rd Australian Association of Gerontology. 17-20th November 2020, Hobart, Tasmania.
- George, D., Villarosa, A.R., Philip, P., Elizabeth, C., Norman, G., Gopinath, A., Salamonson, Y., & George, A. (2019) Perception of nursing staff towards oral healthcare in Indian hospital: A qualitative study. Australian College of Undergraduate Research Conference. 2-3rd October 2019, University of Newcastle, Australia.
- George, A. (2019) Health and Wellbeing from Ideas to Income and Impact workshop. 8th August 2019, Western Sydney University.
- George, D., Villarosa, A.R., Philip, P., Elizabeth, C., Norman, G., Gopinath, A., Salamonson, Y., & George, A. (2019) Oral care provision in Indian hospitals: Perspectives of nursing staff. Health Beyond Research & Innovation Showcase. 5-6th June 2019, William Inglis Hotel, Warwick Farm, Australia.
- George, A., & Nery, E. (2019) Oral health & dental care. Recipes & Research for Residents. 16th May 2019, Ingham Institute for Applied Medical Research, Liverpool.
- George, A., (2018) Interdisciplinary oral health care- VIP presentation. Ingham Institute 6th Annual Awards Dinner. 16th February 2018, Liverpool Catholic Club.
- George, A. (2018) Tips for writing your impact statement. 28th June 2018, School of Nursing & Midwifery, Western Sydney University, Parramatta City Campus.
- George, A., & Ajwani, S. (2018) Midwifery Initiated Oral Health Program (MIOH). SLHD 2018 Education and Training Forum. 31st May 2018, CEWD Rozelle Campus.
- George, A., & Villarosa, A. (2018) Interdisciplinary oral health care in Australia. Poche Centre for Indigenous Health- Professional Development day. 10th April 2018, NSW Centre for Oral Health Strategy, Sydney.
- George, A. (2018) Sharing responsibilities and overcoming professional constraint for person centred care. North Richmond Community Health's (NRCH) Conference "Conversations About Care". 1-2nd March 2018, Melbourne.
- George, A., (2017) Interdisciplinary oral health care research- Australia Chairman's lunch. 17th May 2018, NSW Parliament House, Sydney.
- George, A. (2017) Making oral health everyone's business: Interdisciplinary approach. Poche Centre for Indigenous Health- Professional Development day. 9th May 2017, Nepean Hospital, Sydney.
- George, A. (2017) Making oral health everyone's business: Interdisciplinary approach. Public Health Integrated Practice Research Network. 6th July 2017, North Richmond Community Health, Melbourne.

- George, A. (2016) Promoting perinatal oral health- Current evidence and implications for practice, pregnancy and childbirth. Discussing current academic research and clinical expertise conference. 13-15th September 2016, Online Conference (invited Speaker).

INTERPROFESSIONAL EDUCATION

- George, A., Villarosa, A., Duff, M., Sheehan, A., Burns, E., Priddis, H., & Dahlen, H. (2019) Training undergraduate midwifery students to promote oral health in Australia. International Association for Dental Research Asia-Pacific Region 2019. 28-30th November 2019, Brisbane, Australia.
- George, A., & Schinkewitsch, T. (2019) Building capacity of nurses and midwives to promote perinatal oral health. 4th Australian Nursing & Midwifery Conference. 2-3rd May 2019, Newcastle, NSW.
- Dixon, C., & George, A. (2016) Promoting child oral health- Pilot of an online module for postgraduate nursing students. Health Beyond Research and Teaching showcase. 18-19th October 2016, Liverpool Catholic Club, Sydney.
- George, A., Duff, M., Sheehan, A., Burns, E., Dahlen, H., Priddis, H., Schmeid, V., & Villarosa, A. (2016) Evaluating the long-term impact of an oral health training module for undergraduate midwifery students in Western Sydney. Health Beyond Research and Teaching showcase. 18-19th October 2016, Liverpool Catholic Club, Sydney.
- George, A., Duff, M., Dahlen, H., Burns, E., Priddis, H., Schmeid, V., Sheehan, A., & Patterson, T. (2015) Training midwifery undergraduate students in oral health: An innovative approach. Ingham Institute for Applied Medical Research 10th Annual Research & Teaching Showcase. 27th November 2015, Liverpool, Hospital.

MATERNITY

- George, A. (2020) Oral health care during pregnancy: A new role for midwives in Australia. ADA NSW Convention 2020, 14-16th May 2020, Newcastle, Sydney.
- Kong, A. & George, A. (2019) Healthy smiles for mothers and children. Mothers, Children and Healthy Connections. 6th Nov 2019, Ingham Institute for Applied Medical Research, Liverpool.
- George, A. (2018) Maternal and infant oral health care: Current recommendations & strategies. SPHERE ELDOh Collaboration forum. 1st July 2018, Western Sydney University, Campbelltown.
- George, A. (2018) Maternal and infant oral health care: Current recommendations and strategies. The Sydney Partnership for Health, Education, Research & Enterprise (SPHERE) ELDOH event. 1st June 2018, Western Sydney University, Campbelltown.
- Tannous, K., George, A., & Ahmed, M.O. (2018) Economic value of midwifery oral health screening and provision of cost free dental service. Australian Health Economics Society Conference. 25-26th September 2018, Hobart, Tasmania.
- George, A., (2017) Promoting oral health of pregnant women: Impact of the Midwifery Initiated Oral Health (MIOH) Program. Impact Retreat Western Sydney University. 4th December 2017, Western Sydney University, Campbelltown.
- George, A., Dahlen, H., Reath, J., Ajwani, S., Bhole, S., Sousa, M.S., Johnson, M. (2017) Quality perinatal oral health care at risk: the need for comprehensive perinatal oral health practice guidelines in Australia. 2017 Health Beyond Research & Innovation Showcase, June 6-7 2017 Campbelltown Catholic Club, Campbelltown.
- George, A., Farley, J., Bhole, S., Ajwani, S., Srinivas, R., Blinkhorn, A., Yaacoub, A., Dahlen, H., Ellis, S., & Johnson, M. (2016) A process evaluation of the midwifery initiated oral health dental service program: Perceptions of dentists. Beyond Research and Teaching showcase. 18-19th October 2016, Liverpool Catholic Club, Sydney.

- George, A., Bhole, S., Farley, J., Ajwani, S., Dahlen, H., Srinivas, R., Blinkhorn, A., Yaacoub, A., Ellis, E., & Johnson, M. (2016) Midwifery-Dental intervention to improve oral health: A Process Evaluation. FDI Annual World Dental Congress. 7-10th September 2016, Poznan, Poland.
- George, A., Ajwani, S., Bhole, S., Johnson, M., Dahlen, H., Reath, J., & Korda, A. (2015) To drill or not to drill-Perceptions of dentists and antenatal care providers in NSW. Sydney Innovation and Research Symposium. 29th May 2015, Australian Technology Park, Sydney.
- George, A., Johnson, M., Dahlen, H., Reath, J., Ajwani, S., Korda, A., Bhole, S., Miranda, C., & Ng Chok, H. (2015) Perinatal oral health: Perceptions of antenatal care providers in New South Wales, Australia. RCOG and RANZCOG World Congress 2015. 12-15th April 2015, Brisbane Convention and Exhibition Centre, Brisbane, Queensland, Australia

MENTAL HEALTH

- Patterson Norrie, T., Ramjan, L., Sousa, M., Sank, L., & George, A. (2020) Can dietitians have a role in oral health promotion for individuals with an eating disorder? A review. International Conference on Eating Disorders. 11-13th June 2020, Sydney, Australia.
- Patterson Norrie, T., Ramjan, L., Sousa, M., Sank, L., & George, A. (2019) The role of dietitians in promoting oral health among people with eating disorders: A scoping review. More than meets the eye, Dietitians Association of Australia 2019 National Conference. 12-14th August 2019, Gold Coast conference and exhibition centre, Gold Coast, Australia.
- Patterson Norrie, T., Ramjan, L., Sousa, M., Sank, L., & George, A. (2019) Dietitian initiated oral health promotion and prevention in populations with an eating disorder: A scoping review. Joanna Briggs Collaboration Regional Symposium in Evidence Based Healthcare. 28th June 2019, St George Hospital, Sydney, Australia.

OBESITY

- Villarosa, A.R., Ramjan, L., Maneze, D., Camilleri, M., Srinivas, R., & George, A. (2019) Guideline implementation strategies in the dental setting: A systematic review. 2nd Asia Pacific Conference on Integrated Care 2019. 11-13th November 2019, Melbourne, Australia.
- Villarosa, A.R., Ramjan, L.M., Maneze, D., Camilleri, M., Srinivas, R., & George, A. (2019) Guideline implementation strategies in the dental setting: A systematic review. The Inaugural Joanna Briggs Collaboration Regional Symposium in Evidence Based Healthcare. 28th June 2019, St George Hospital, Kogarah, Australia.
- Villarosa, A.R., George, D., Ramjan, L.M., Srinivas, R., & George A. (2019) The role of dental practitioners in addressing overweight and obesity among children: A scoping review of current interventions and strategies. Health Beyond Research & Innovation Showcase. 5-6th June 2018, William Inglis Hotel, Warwick Farm, Australia.
- George, A., & Villarosa, A. (2018) Expanding the role of dental and non-dental professionals in Australia. Australian Dental and Oral Health Therapist's Association Professional Development Day & AGM. 3rd November 2018, Moby Beachside Retreat, Forster, NSW.

PAEDIATRICS

- Blythe, S., Acharya, R., & George, A. (2020) The oral health needs of children in out-of-home care and the role of foster carers: A scoping review. International Foster Care Organization Conference. 25-28th June 2020, Québec, Canada.
- Baker, J.R., Raman, S., Kohlhoff, J., George, A., Kaplun, C., Dadich, A., Arora, A., Zwi, K., Schmieid, V., & Eapen, V. (2019) Optimising refugee children's health and wellbeing in preparation for primary and secondary school. Health Beyond Research & Innovation Showcase. 5-6th June 2019, William Inglis Hotel, Warwick Farm, Australia.

- Jess Baker, S. Raman, J. Kohlhoff, A. George, A. Dadich, C., Kaplun, C.B., Arora, A., Schmied, V., Zwi, K., & Eapen, V. (2018) Optimising Refugee children's wellbeing in preparation of primary & secondary school. The 7th Annual NHMRC Symposium on Research Translation. 27-28th November 2018, Sydney, Australia.
- George, A., Dahlen, H., Reath, J., Ajwani, S., Bhole, S., Sousa, M.S., & Johnson, M. (2017) Quality perinatal oral health care at risk: The need for comprehensive perinatal oral health practice guidelines in Australia. 2017 Health Beyond Research & Innovation Showcase. 6-7th June 2017, Sydney, Australia.
- George, A., Ajwani, S., Bhole, S., Johnson, M., Dahlen, H., Reath, J., Korda, A., Miranda, C., & Ng Chok, H. (2015) Perinatal oral health care: Perceptions and practices of dentists in New South Wales (NSW), Australia. Population Health Congress 2015. 6-9th September 2015, Hobart, Australia.

STROKE

- Ferguson, C., George, A., Villarosa, A., Kong, A., Bhole, S., & Ajwani, S. (2019) Exploring nursing & allied health perspectives of quality oral care for individuals after stroke: The IDEAS study. Stroke society of Australasia 2019. 10-13th September 2019, Canberra, Australia.
- Ajwani, S., Bhole, S., Anderson, C., Tastula, C., Canham, B., & George, A. (2018) Oral care after stroke: Perceptions of patients in Sydney, Australia. 2018 IADR/PER General Session & Exhibition. 25-28th July 2018, London, England.
- Ajwani, S., Bhole, B., Anderson, C., Tastula, K., Canham, B., & George, A. (2017) Oral care post stroke – Perceptions of non-dental professionals in Sydney. ADR/AADR/CADR General Session & Exhibition. 22-25th March 2017, San Francisco, California, USA.
- Ajwani, S., Jayanti, S., Burkolter, N., Anderson, C., Bhole, S., Itaoui, R., & George, A. (2016) Integrated oral care for stroke patients. Asia Pacific Stroke Conference. 15-17th July 2016, Brisbane, Australia.

SOCIAL ACTIVITIES

CELEBRATIONS



We've had the wonderful privilege of celebrating some of our team's significant life events during their time at COHORT, including marriage - Ariana (left) and COHORT's first baby - Tiffany (right).

CATCH-UPS



Featured are a few of our many social dinners (left) and lunch catch-ups (right). We also have a fortnightly PhD student catch-up over coffee to keep in touch and provide support

TEAM BUILDING



Collaboration and learning to work as a team is essential to our culture at COHORT. To facilitate this, we've had a number of strategic planning and team building days (left). We also visited Melbourne for the launch of the Australian Network for Integration of Oral Health (right).

FUTURE DIRECTIONS



The Australian Network for Integration of Oral Health

In 2017, COHORT partnered with La Trobe University and key stakeholders to establish the Australian Network for Integration of Oral Health (NIOH). NIOH is an independent group, connected through our mission to put the mouth back into the body and make oral health everyone's business. NIOH draws from multiple and diverse areas of health and social sciences and includes academics, practitioners and advocates. Our members work across universities, government agencies, not-for-profits, primary health care services, consumer groups, hospitals and industry within Australia.

PARTNER ORGANISATIONS OF NIOH

VIC	North Richmond Community Health; University of Melbourne; Latrobe University; Deakin University; RMIT; Department of Health & Human Services, Victoria; Dental Health Services Victoria; Monash Health; Royal Children's Hospital Melbourne; Victorian Oral Health Alliance
NSW	Western Sydney University; The University of Sydney; NSW Health; South Western Sydney Local Health District; Ingham Institute for Applied Medical Research, Sydney Local Health District
WA	University of Western Australia
QLD	University of Queensland
TAS	University of Tasmania; Dental Health Services Tasmania

THE LAUNCH OF NIOH

On the 12th of November 2019, NIOH was launched at the 2nd Asia Pacific Conference on Integrated Care at the Melbourne Convention and Exhibition Centre, Victoria. This launch was attended by various organisations, researchers and policy makers from across the country, and was inaugurated by A/Prof Erin Hartnett, the program director of Oral Health Nursing Education and Practice (OHNEP) at New York University.



Pictured: The launch of NIOH



Pictured (left to right): Ariana Kong, Paula Sanchez, Erin Hartnett, Ajesh George, Amy Villarosa, Reecha Acharya, Prakash Poudel



GET TO KNOW US

Tiffany Patterson Norrie

What is your current position?

I have multiple roles at COHORT, firstly, being a part-time PhD student looking at the scope of practice of dietitians in performing oral health screening and promotion in populations with an eating disorder. Secondly, I work as a research assistant, assisting with projects on oral health and intellectual disability. I am also a generalist and paediatric clinical dietitian at Canterbury Hospital in Sydney. Outside of my professional life, I was promoted to the role of 'mum' in October 2019! This was happily celebrated at COHORT, as the first "COHORT baby", and I was lovingly gifted a branded baby onesie to commemorate the milestone.



Tell us about your background

My professional story is not exactly conventional, as my life experiences moulded my eventual career path. In my initial pursuit of studying medicine, I commenced a Bachelor of Medical and Health Science after high school. However, I felt the need to pursue a more clinically grounded role, and commenced a Bachelor of Nursing (advanced) in 2013, where I had the opportunity to experience the world of research. Intrigued, I decided to complete my Bachelor of Medical and Health Science, as well as a Master of Nutrition and dietetics to integrate my passion for nutrition with my interest in research.

What are your research interests?

My areas of interest are in paediatrics and mental health. Earlier in my research career I collaborated in paediatric oral health, feeding and palliative care. I am also interested in the role of non-dental

professionals in promoting oral health in mental health settings, which is the crux of my PhD.

How did you wind up at COHORT?

I began working with Ajesh before COHORT began back in 2014 as a summer scholar through Western Sydney University, where I gained my passion for research. Once COHORT started, I worked under the supervision of Ajesh as a Research Assistant, following which I started as a PhD student with Ajesh to further develop my research skills.

How has COHORT fostered excellence in your research?

Much of my research interest and expertise focuses on qualitative methodologies as I always want to know 'why'. A lot of my experience has been in qualitative research or systematic reviews. Through my research experience at COHORT, I have had the opportunity to publish 5 papers (two as lead author), participate in 6 conference presentations and win an award as part of my PhD at the 2018 HDR Showcase at Western Sydney University.

Where to next for you?



Like any PhD student, my biggest goal is to actually finish my PhD. I would also want to continue the work I have started as a post doc. Beyond this I would love to always have a hand in clinical work, especially to continue to specialise in early life nutrition and feeding difficulties. As an end goal I would like to contribute to my

research areas of interest, teach and hopefully, work in my own paediatric private practice!



INGHAM INSTITUTE FOR APPLIED MEDICAL RESEARCH

Level 3, 1 Campbell Street Liverpool NSW 2170 | Locked Bag 7103, Liverpool BC NSW 1871
02 8738 9356 | a.george@westernsydney.edu.au | <https://cohortaustralia.com>

